



Sustainability Plan

Our strategy for creating better places
for people and the environment



Peel L&P Realising Possibility



We devote our energy to accomplishing great things; not for their own sake, or ours, but for those who come after. Today, tomorrow and for generations to come. Our ambitions are for a more prosperous, sustainable future for all; where people and places are matched with the opportunity to be the very best they can be.

Our **sustainability plan** aims to help us meet the current needs of our business and stakeholders whilst keeping ahead of key trends to ensure we future-proof our activities. We are often the facilitator, with an in-direct impact on sustainability, and our ambitions can only be achieved by working together with partners to keep pace with key future trends.

We see possibility.
We deliver transformation.



Peel L&P model



Future trends identified by the UK Green Building Council

The Past

Reasonable change of pace

Regulation is the answer

Do less

Business as usual

It sits with the sustainability team

The Future

Unprecedented instability

Business leadership is key

Do more

Breakthrough innovation

The mainstream own it



Climate change



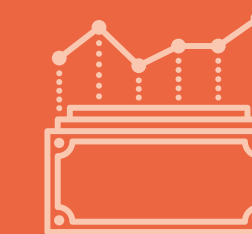
Nature & Biodiversity



Health & Wellbeing



Resource use



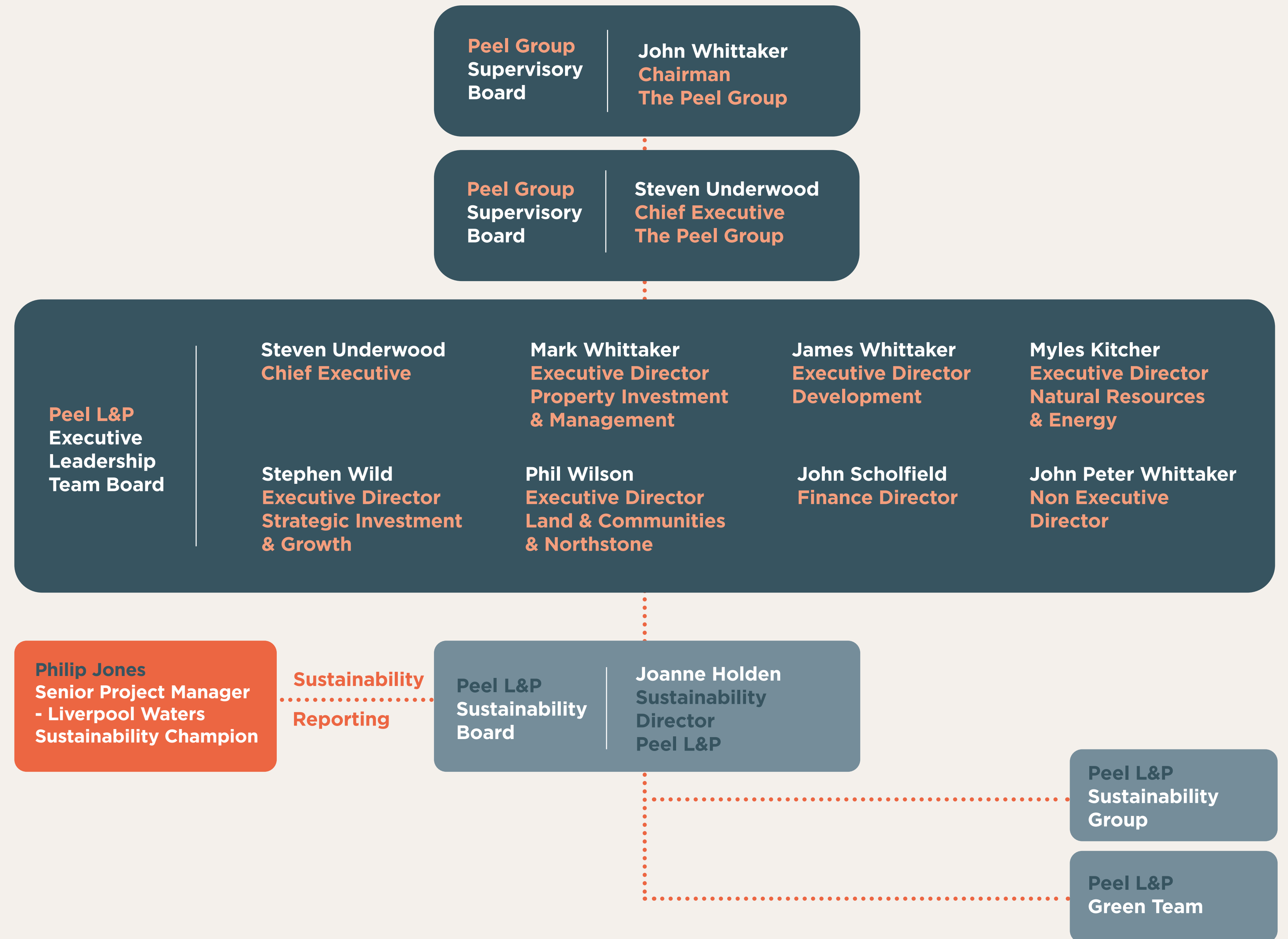
Socio-economic impact

Peel L&P on governance

At Peel L&P we recognise the responsibility we hold as a leader in regeneration projects, and we understand that this responsibility starts with a governance structure that involves our Executive and Senior Leadership Teams.

Our sustainability activities are reported quarterly by business unit to the Peel L&P Sustainability Board, which in turn reports quarterly to the Executive Leadership Team Board.

The Peel L&P Sustainability Group and the Green Team both engage our practitioners in the delivery aspects of sustainability matters. A network of Sustainability Champions and Energy Champions ensure sustainability is embedded in everyday thinking.



Sustainability Principles

From the three pillars of sustainability - balancing the economy, environmental responsibility and community needs - we have developed 7 Sustainability Principles.

To encourage the creation of highly sustainable, future-proofed destinations, we have developed the Principles for all our partners to seek to deliver in our development schemes. By setting a consistent approach across our developments and measuring progress, we can ensure our activities deliver liveability for whole communities, more sustainable individual sites and long-term custodianship.

1

Create opportunities for people to lead better, more prosperous lives

2

Engage with local people to understand the needs of existing and future communities

3

Develop highly sustainable and smart built environments

4

Embrace a low carbon energy strategy

5

Strive to put more back into the natural environment than is taken out

6

Support the health and wellbeing of communities by creating beautiful, functional and well-used green public realm

7

Promote sustainable transport options for all

**12 RESPONSIBLE
CONSUMPTION
AND PRODUCTION**



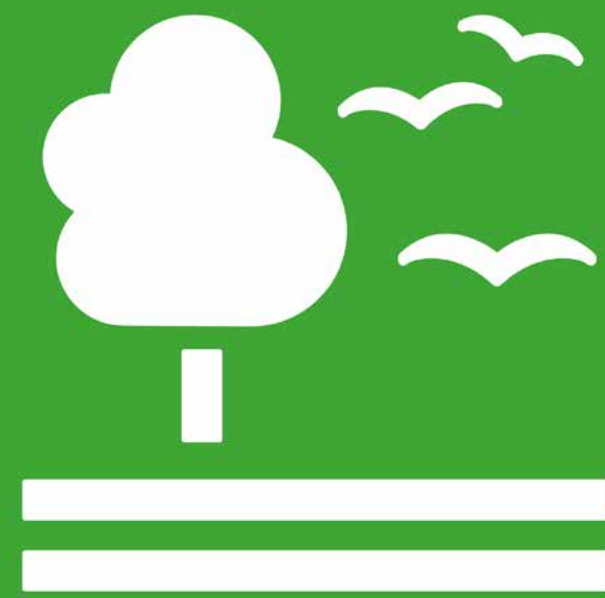
**11 SUSTAINABLE CITIES
AND COMMUNITIES**



**8 DECENT WORK AND
ECONOMIC GROWTH**



**15 LIFE
ON LAND**



The United Nations Sustainable Development Goals (SDGs)

The UN's 17 SDGs, otherwise known as the Global Goals, were launched in 2015 and underpin our ambition to embed sustainability into our placemaking activities.

We support the principles of the SDGs and have started to look at how we can play our part in contributing to them.

We have prioritised the four that are most relevant to our business activities and recognise that none could be achieved without working in partnership with our stakeholders including Liverpool City Council, the City Region's combined authority, and our private investors and partners.

Liverpool Waters' UN SDG Commitments



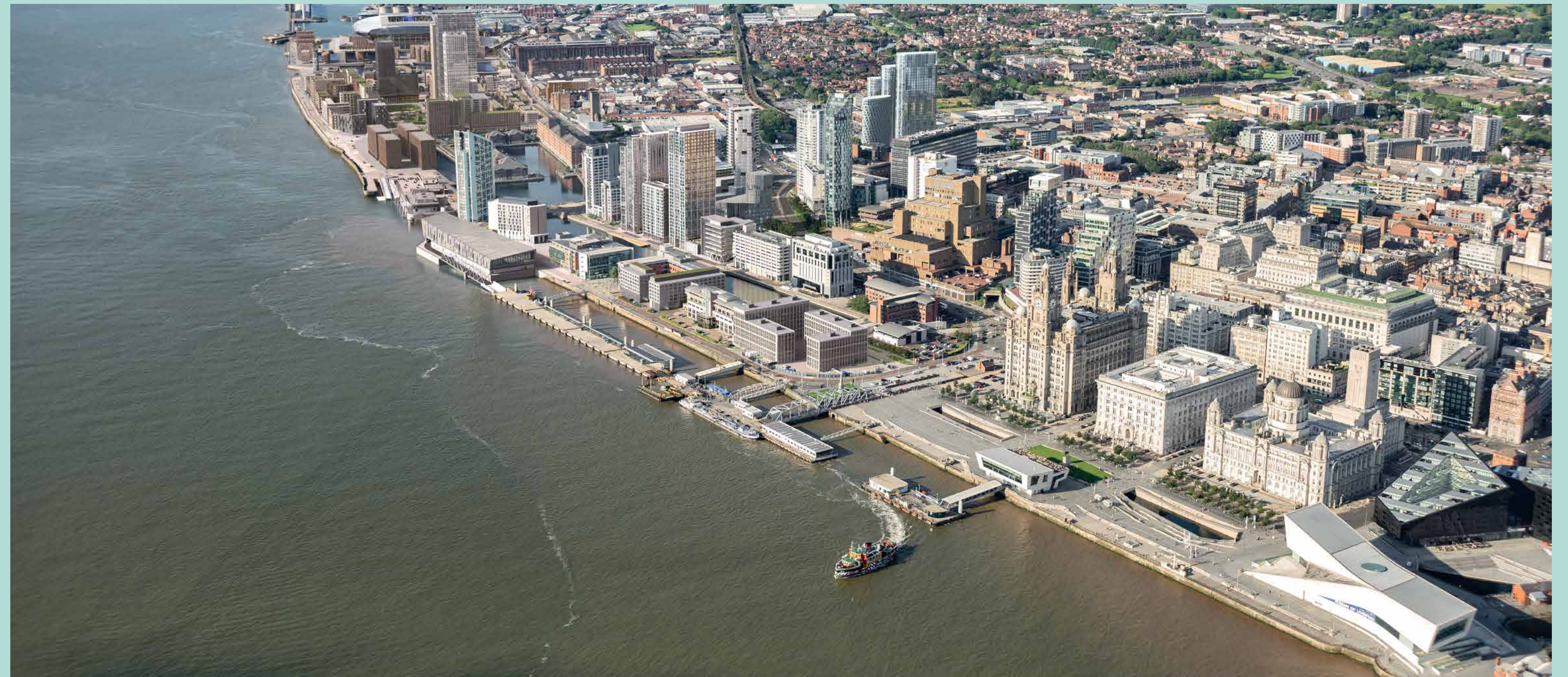
12 RESPONSIBLE CONSUMPTION AND PRODUCTION



Ensure sustainable consumption and production patterns

What does this mean?

Sustainable use of natural resources, reduction of waste and sustainable business practices.



Our Commitment:

We will continually improve the sustainability of our existing assets.

Liverpool Waters is a live regeneration scheme in the centre of the City of Liverpool. The development, which is currently situated over 150 acres of undeveloped brownfield land, will create five brand new neighbourhoods where people

can live, work and thrive. We have over 220,000 sq ft of developed office accommodation and over 1,000 existing homes on the developed area of Liverpool Waters, as well as the potential for 9,000 new homes and 20m sq ft of commercial space. Here we have extensive opportunities to integrate sustainable practices into our day-to-day business activities, such as helping to reduce carbon emissions by managing our energy and waste responsibly. For example, Peel L&P-owned buildings use the

ISO 50001 energy management system to identify and implement energy saving and carbon reduction measures. This goal can specifically be achieved through the continued development of our new District Heating Network which is currently being constructed and installed. Making use of sustainable forms of energy including ground source, water source and air source heating to pump hot water around the existing estate and the new neighbourhoods being introduced by the development.

11 SUSTAINABLE CITIES AND COMMUNITIES



Make cities and human settlements inclusive, safe, resilient and sustainable

What does this mean?

High quality, safe and accessible housing, green spaces and public realm; inclusive and sustainable urbanisation; protecting and safeguarding cultural and natural heritage.



Our Commitment:

We will support the development of sustainable low-carbon communities, transport, energy and infrastructure.

Liverpool Waters benefits from and is in the process of creating new high quality walking and cycling routes into the city, to ensure car ownership can remain low and people can live, work and visit in an inclusive manner.

As the masterplan lies within the World Heritage Site, safeguarding the cultural heritage of the dockland is a core commitment. Liverpool

Waters has a role to protect and enhance this landscape, bringing it back into use in a sensitive and appropriate manner. The masterplan seeks to respect the heritage of the site, whilst providing a new neighbourhood that meets the challenges of the future, where people can also explore and learn about the former dock network and the role this played in Liverpool's growth as a city.

Within the heart of Liverpool Waters, central to all new development is an extensive, 1.9 ha park. Central Park is designed to be a core location where all visitors, residents and workers of Liverpool Waters can meet, sit, play or enjoy the unique

setting. Its central location ensures it benefits from natural surveillance throughout the day and night – allowing it to feel welcoming to all.

Through the masterplan, Liverpool Waters has committed to providing the elements described above, alongside a range of new housing, workplaces and supporting uses, to be accessible to all people, and provide an offer attractive to all. As well as individual development plots, Liverpool Waters is also committed to deliver the wider public realm, to create a unique new dockland environment, that is vibrant, accessible, exciting and a place where all people feel welcome.

8 DECENT WORK AND ECONOMIC GROWTH



Promote sustained, inclusive and sustainable economic growth, full and productive employment and decent work for all

What does this mean?

Economic growth, safe working environments and sustainable tourism.



Our Commitment:

We will create new training, employment and local business opportunities through our regeneration activities.

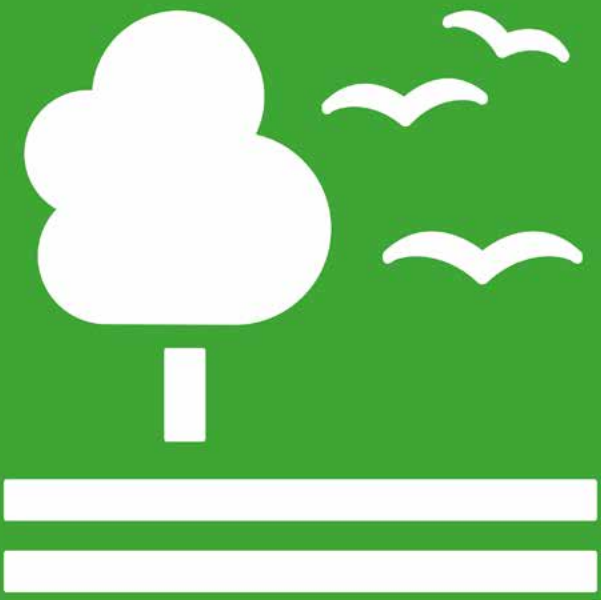
As a social investor and master developer at Liverpool Waters, we work with our partners to

develop the skills of local people and create job opportunities that benefit the local economy.

We pledge to work with one of the leading further education colleges in the City Region in assisting their objectives to create apprenticeships, nurture local skills and develop talent in the build environment.

Liverpool Waters is a £5bn project and we pledge to invest significant funding within the local community and partner with local organisations where possible.

15 LIFE ON LAND



Protect, restore and promote sustainable use of terrestrial ecosystems, sustainably manage forests, halt and reverse land degradation and promote biodiversity net gain

What does this mean?

Conservation, restoration, sustainable use of terrestrial and inland freshwater ecosystems and the enhancement of natural habitats and biodiversity.



Our Commitment:

We will help communities to connect with nature

Liverpool Waters has a unique challenge on its hands. It aspires to deliver welcoming neighbourhoods, with new parkland and attractive landscapes for people to sit and enjoy. Landscapes which are climate resilient and biodiverse whilst providing spaces for families to play and workers on their lunchbreaks to relax. However, former dockland is not naturally green as this is a challenging location for vegetation to grow.

Central Park is one of a number of new public open spaces throughout the masterplan. The formal spaces outlined within the planning

permission account for 7.3 ha of the total site area – of which the park accounts for over a quarter of this area (1.9 ha). This formal public open space occupies only a small area of the dockland, post-development. There is an additional 25ha of potential ‘public realm’ available for conservation and creation of natural habitats. Liverpool waters is committed to using this space in a positive manner to further the goal of biodiversity net gain across the masterplan.

A significant quantity of the Liverpool Waters masterplan (18 ha) will be retained dock waterspace. This space provides another unique opportunity to enhance the brackish ecosystem, with a significant long-term ecological plan underway.

Due to the close proximity of Liverpool Waters to the mouth of the River Mersey and the ocean beyond, there is potential for future flooding caused by sea level change. Liverpool Waters has committed to raising a large area of dockland to combat such risk. Additionally, flood storage and rain gardens have been proposed to reduce surface water runoff, reducing the risk and potential damage of flooding. Reduced surface runoff will also keep the water ecosystem clean for species to flourish.

Targets

Our 4 commitments are underpinned by 11 targets, focussed on the sustainability issues that are most relevant to our business activities and associated stakeholders.

SDG 12: Ensure sustainable consumption and production patterns

Energy

- Maintain ISO 50001 certification.
- Continue to assess the implications of developing Net Zero Carbon buildings.



Office Sustainability

- Conduct an annual sustainability survey of our tenants and staff at Liverpool Waters to find ways to continually improve.
- Add a Sustainability agenda item to Liverpool Waters Team meetings to ensure discussion of internal- and external-facing environmental and social matters.

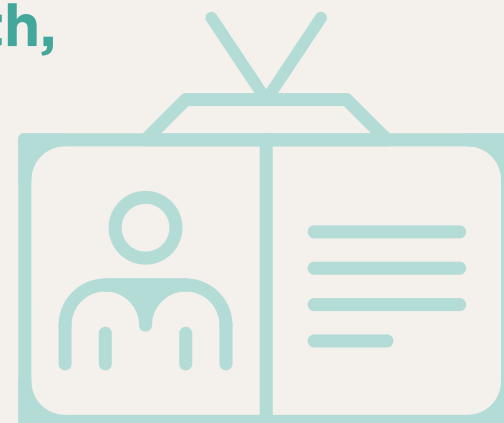
SDG 11: Make cities and human settlements inclusive, safe, resilient and sustainable

Buildings

- Develop all new commercial buildings to gain a BREEAM Excellent rating.
- Utilise assets to provide and produce low carbon energy sources such as a District Heating Network and have new and existing buildings consent to that system. This will be for buildings and developments that are within the Peel L&P control and for external partners and developers.



SDG 8: Promote sustained, inclusive and sustainable economic growth, full and productive employment and decent work for all



Jobs & Skills

- Include the Peel L&P sustainability metrics into each development plot sale and building contract to properly measure the training and employment metrics from Liverpool Waters.
- Maintain and improve the Liverpool Waters Construction Hub in collaboration with the City of Liverpool College to become a facility for apprenticeships, training, re-training and recruitment into the local network of contractors, sub-contractors, suppliers and the Liverpool City Region built environment in general.
- Maintain at least one member of the team on the Liverpool City Region Combined Authority Built Environment board.

SDG 15: Protect, restore and promote sustainable use of terrestrial ecosystems, halt and reverse land degradation and promote biodiversity net gain

Biodiversity

- Incorporate some of the outcomes of the Biodiversity Net Gain assessment undertaken in 2019, to enhance biodiversity across the Liverpool Waters site.

