



Sustainability Plan

| Our strategy for creating better places
for people and the environment



Peel L&P Realising Possibility



We devote our energy to accomplishing great things; not for their own sake, or ours, but for those who come after. Today, tomorrow and for generations to come. Our ambitions are for a more prosperous, sustainable future for all; where people and places are matched with the opportunity to be the very best they can be.

We see possibility.
We deliver transformation.

Our **sustainability plan** aims to help us meet the current needs of our business and stakeholders whilst keeping ahead of key trends to ensure we future-proof our activities. We are often the facilitator, with an in-direct impact on sustainability, and our ambitions can only be achieved by working together with partners to keep pace with key future trends.



Peel L&P model

Future trends identified by the UK Green Building Council

The Past

Reasonable change of pace

Regulation is the answer

Do less

Business as usual

It sits with the
sustainability team

The Future

Unprecedented instability

Business leadership is key

Do more

Breakthrough innovation

The mainstream own it



Climate change



**Nature &
Biodiversity**



**Health &
Wellbeing**



Resource use



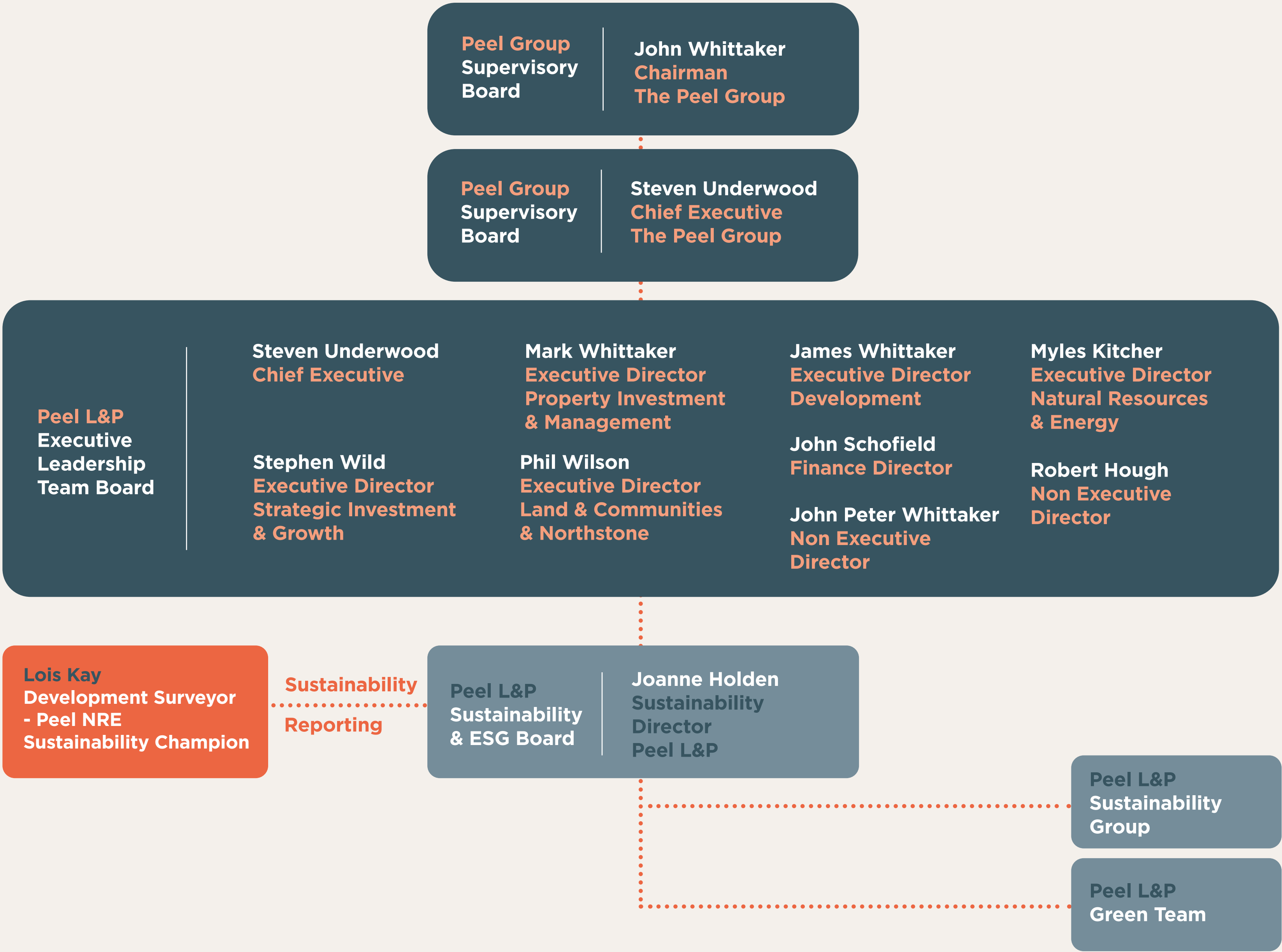
**Socio-economic
impact**

Peel L&P on governance

At Peel L&P we recognise the responsibility we hold as a leader in regeneration projects, and we understand that this responsibility starts with a governance structure that involves our Executive and Senior Leadership Teams.

Our sustainability activities are reported quarterly by business unit to the Peel L&P Sustainability Board, which in turn reports quarterly to the Executive Leadership Team Board.

The Peel L&P Sustainability Group and the Green Team both engage our practitioners in the delivery aspects of sustainability matters. A network of Sustainability Champions and Energy Champions ensure sustainability is embedded in everyday thinking.



Sustainability Principles

From the three pillars of sustainability - balancing the economy, environmental responsibility and community needs - we have developed 7 Sustainability Principles.

To encourage the creation of highly sustainable, future-proofed destinations, we have developed the Principles for all our partners to seek to deliver in our development schemes. By setting a consistent approach across our developments and measuring progress, we can ensure our activities deliver liveability for whole communities, more sustainable individual sites and long-term custodianship.

1

Create opportunities for people to lead better, more prosperous lives

2

Engage with local people to understand the needs of existing and future communities

3

Develop highly sustainable and smart built environments

4

Embrace a low carbon energy strategy

5

Strive to put more back into the natural environment than is taken out

6

Support the health and wellbeing of communities by creating beautiful, functional and well-used green public realm

7

Promote sustainable transport options for all

7 AFFORDABLE AND CLEAN ENERGY



11 SUSTAINABLE CITIES AND COMMUNITIES



8 DECENT WORK AND ECONOMIC GROWTH



9 INDUSTRY, INNOVATION AND INFRASTRUCTURE



The United Nations Sustainable Development Goals (SDGs)

The UN's 17 SDGs, otherwise known as the Global Goals, were launched in 2015 and underpin our ambition to embed sustainability into our placemaking activities.

We support the principles of the SDGs and have started to look at how we can play our part in contributing to them.

We have prioritised the four that are most relevant to our business activities and recognise that none could be achieved without working in partnership with our stakeholders.

Peel NRE's UN SDG Commitments

Peel NRE, part of Peel L&P, is at the heart of the nation's activity around clean growth and the circular economy – helping the UK achieve net zero by 2050 and supporting the regions in their actions to achieve climate emergency targets.

With our partners we re-use, re-purpose and re-energise natural resources to develop and maintain vital infrastructure across the UK and are experts in renewable energies, district heating, waste to value, water management, materials management and electric vehicle charging.



7 AFFORDABLE AND CLEAN ENERGY



Ensure access to
affordable, reliable,
sustainable and modern
energy for all

What does this mean?

Pursue innovation in energy production to provide sustainable heat and power sources for current and future generations.



Our Commitment:

We will continually explore innovation in energy production

Through our business areas, including renewable and low carbon waste management and energy production, we have the opportunity to work in partnership with investors, technology providers and businesses, together with the public sector, to provide bespoke real

estate, infrastructure and operational solutions to benefit sustainable energy provision both in the regions we are based and nationally.

In Liverpool, our Mersey Heat energy service company (ESCO) is delivering a low carbon district heat network. Across the UK we have delivered over 180MW of onshore wind, including the 65MW Scout Moor wind-farm, and are currently delivering a

further 120MW on the Shetland Islands. Our Protos, Cheshire energy and resource hub leads the way in low carbon energy and waste management with the deployment of innovative technologies including the UK's first plastic-to-hydrogen facility, a 21.5MW biomass plant, a 49MW energy from waste plant in construction and a plastic park blueprint to revolutionise plastic recycling nationwide.

11 SUSTAINABLE CITIES AND COMMUNITIES



Make cities and human settlements inclusive, safe, resilient and sustainable

What does this mean?

Contribute towards making places for the economy, communities and nature to thrive.



Our Commitment:

We will develop our strategy for engagement with local communities and partners, and work across Peel L&P to promote the benefits of using recycled aggregates

Engagement and participation are integral to Peel NRE's approach to community consultation, being a good neighbour, and supporting economic and social growth of the regions in which we are based. Over the coming years, we will be building social value and net

gain assessments into many of our projects to further this commitment. place where all people feel welcome.

8 DECENT WORK AND ECONOMIC GROWTH



Promote sustained, inclusive and sustainable economic growth, full and productive employment and decent work for all

What does this mean?

Economic and skill growth, inclusive and engaging working environments.

Our Commitment:

We will support training, employment and local business opportunities through our activities

At Peel NRE, we have a strong track record in working with partners to deliver successful natural

resources and energy projects, providing solutions and expertise to Government ministers, public and trade bodies and industry leaders. Thus, we are in a strong position to give back and support the regions in which we work with their carbon reduction and COVID-19 recovery plans over the coming years. As a newly formed business [unit],

bringing three divisions of Peel L&P together, we seek to continually expand through volunteering activities associated with the areas in which we work, and supporting the next generation of talent.



9 INDUSTRY, INNOVATION AND INFRASTRUCTURE



**Build resilient infrastructure,
promote inclusive and
sustainable industrialisation
and foster innovation**

What does this mean?

Innovation in energy provision
and waste management to support
decarbonisation.



Our Commitment:

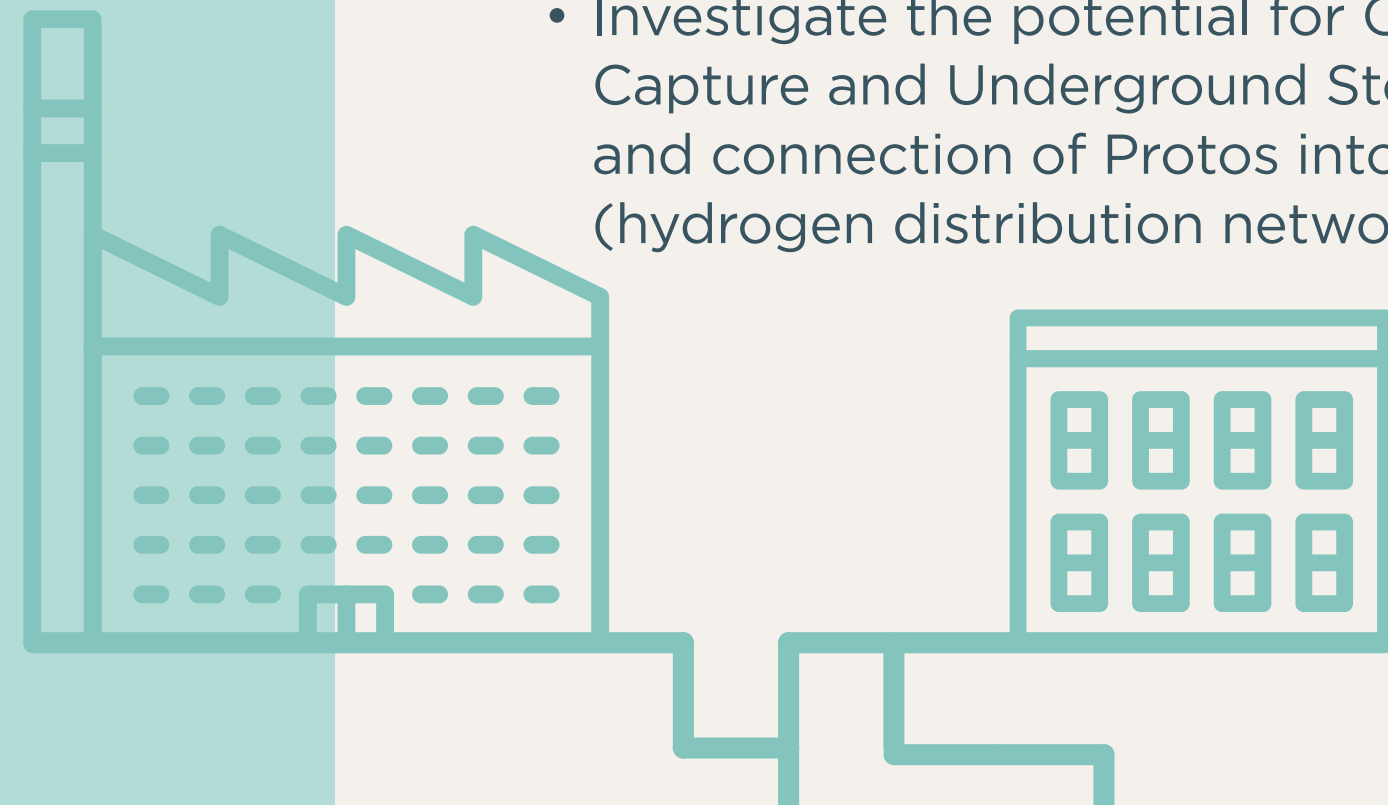
***Work with partners to explore
and implement innovation to
support national clean growth
and the circular economy***

Across Peel NRE, we provide time
and resources to regional working
groups focused on economic,
energy and waste management
resilience through cross- business
collaboration.

Over the next 5 years, we look to
bolster the nation's ability to deal
with non-recyclable plastic and
further development of district heat
network projects.

Targets

Our 4 commitments are underpinned by 8 one-year targets and 9 five-year targets, focussed on the sustainability issues that are most relevant to our business activities and associated stakeholders.



SDG 7: Ensure access to affordable, reliable, sustainable and modern energy for all

1 year target

- Support the development of the EPort study (looking at a multi-vector energy solution for Ellesmere Port) by dedicating resource as a consortium member for future phases of the project.
- Enable the opportunity for occupiers at Protos to join a local grid allowing more sustainable, direct provision of energy to adjacent facilities.

5 year target

- Investigate the potential for Carbon Capture and Underground Storage (CCUS) and connection of Protos into Hynet (hydrogen distribution network).

SDG 11: Make cities and human settlements inclusive, safe, resilient and sustainable

1 year target

- For Peel NRE's renewable energy projects, explore the potential opportunity to provide wider benefits to local communities hosting our wind and solar farm developments.

5 year target

- Stimulate a circular economy approach by promoting the use of recycled aggregates across Peel L&P.
- Proactively engage with the local and wider community in our developments beyond statutory and planning and legislative obligations.



SDG 8: Promote sustained, inclusive and sustainable economic growth, full and productive employment and decent work for all

1 year target

- Support a work experience opportunity (Covid restrictions permitting).
 - Establish a Peel NRE volunteering strategy.
-

5 year target

- Increase engagement with Peel L&P People Team initiatives.
- Support local authorities in which our developments are based by communicating upcoming construction and operational facilities, employment opportunities to allow for further education training alignment.
- Support public sector and wider initiatives to achieve carbon reduction and Covid recovery plans in the regions where are projects are located.



SDG 9: Build resilient infrastructure, promote inclusive and sustainable industrialisation and foster innovation.

1 year target

- Investigate a carbon usage scheme at Protos by the end of 2021 subject to successful funding and management approvals, with the intention to reduce the carbon load of the planned PowerHouse Energy hydrogen facility, produce lightweight construction materials and responsibly treat up to 12,000 tonnes per annum of local alkaline residues.
 - Investigate a carbon capture demonstration scheme at Protos by the end of 2021 subject to successful funding and management approvals.
 - Coordinate the delivery of a cross-sector, cross-vector blueprint for industrial decarbonisation in the NW of England and NE Wales by the end of 2022.
-

5 year target

- Seek to develop over 10 Plastic to Hydrogen plants over 5 years, to take locally-generated end of life plastic and create a local source of clean fuel for the automotive sector.
- Create Peel NRE's first plastic park at Protos which will process up to 300,000 tonnes of plastics that would either go to landfill, incineration or be shipped abroad for processing.
- Explore low carbon energy solutions for future district heat network projects.

