

Folk positive on Yell windfarm

By PETER JOHNSON

Plans for a large commercial windfarm overlooking Burravoe received a generally enthusiastic response from the public at open days on Tuesday and Wednesday.

The presentations by windfarm developers Peel Energy in the community public hall were attended by more than 100 people, most of whom were in favour of the project.

Company representatives outlined a development of about 20 turbines, as high as 145m, being installed at Beaw Field, Mossy Hill and also to the east side of the East Yell road which will run through the middle. But the number and size of the turbines may vary, depending on the public response.

Some of the turbines, which will be rated at 2.5-3.5MW and are roughly the same size as

those proposed for Viking Windfarm, can be seen from Gossabrough to the north-east of the windfarm site. The planned site had been moved further east from its original location, proposed by then owners Enertrag, in order to avoid interfering with the Scatsta flight path, a move which has affected its visibility.

It also skirts the Otterswick special protection area which is home to red-throated divers.

Construction costs for the project could run to £100m with a ballpark figure of £1.2m per megawatt of installed power likely to be slightly exceeded given the remote location. A substation will be installed at the windfarm. Negotiations will have to be concluded with the national grid as to how to link Beaw Field to the mainland interconnector. At least part of the connection will have to be under the sea.

Most visitors at the open day quickly focused on an interactive 3D display which could give an accurate impression of how the windfarm will look. Visitors could click on any point in Burravoe, Gossabrough or any nearby road to see how the turbines will appear. Views from the lounge of the Yell ferry or from the air were also available.

At least, as one visitor observed, "there'll be plenty of things to mark fishing meids with."

Beaw Field Windfarm development manager Bernadette Barry said: "I think the feedback was very positive on the whole. I have not had the chance to go through all the written feedback but we were made very welcome in Yell. The people we spoke to were broadly in favour of the project."

(Continued on page three)

'This money belongs to the community'

(Continued from front page)

Peel Energy development director Jon England said on Tuesday: "We're here for the first of two public consultation events to seek, not only the community's but other stakeholders', views on the project; the potential scale for the project and the location of turbines."

"The scheme is not fixed at the moment so we are very interested to hear people's views. We hope to be back at the end of this year with a response to those consultation responses."

Surveys will be carried out on site over the summer. Once all the environmental and technical surveys are complete along with further community consultation later in the year, the final plan will be presented to the community at the beginning of next year and a planning application submitted.

There's no doubt that the interactive demo, which Mr England dubbed "very exciting", quickly captured the attention of visitors. How far it went to assuage concerns on visual impact remains to be seen. The nearest house to the development will be about 700m away and the farm will stretch to about 3km north of Burravoe.

As well as a payment to shareholders in the Burravoe Scattald, the development will bring in £5,000 per rated megawatt of power – roughly £300,000 to £375,000 per year to the community for 25 years – if it goes ahead at the suggested scale. Exactly how far the benefits will be spread has yet to be decided.

The company's own pamphlet says: "Peel Energy firmly believes this money belongs to the community and, as such are highly flexible about how these funds are managed and distributed."

Some visitors who have shares in the neighbouring Gossabrough common grazing expressed scepticism about the development, at least until they could see how they would be compensated.

According to Ms Barry the Burravoe Estate land will be subject to a standard rental agreement. As well as this and the community fund, there may be benefits in terms of peat restoration, habitat improvement and the "amenity" of the area.

In answer to questions from consultees, she added that studies in Scotland and Cornwall had suggested there was no correlation between windfarm proximity and house prices falling.

The developers are hopeful that the needs case for the sub-sea interconnector that will connect Viking Windfarm and the Peel windfarm to the National Grid can be put 'later this year. A strike price for the power produced by these developments will also be announced by the Department of Energy and Climate Change.

• The Shetland Times spoke to several public and Shetland Islands Council visitors to the Peel Energy open day on Tuesday and heard a generally favourable reaction to the wind farm plan.

Burravoe resident Robert Odie said it was "brilliant" and a good use for a "wasted bit of hill if someone will only pay for the interconnector cable". According to the computer simulation Robert and his wife Patricia will see eight windmills "and there won't be any complaints."

Mr Odie said that it was too early to say what the impact on local jobs would be, but "if they're good for that, I think it's a great project." The windmills can be removed and replaced with something better when the time comes.

Margaret and David Towriess, who are shareholders in the Burravoe hill, said that they were "all in favour of it if it can be of benefit to the community". The windmills will only be visible from the back of their house in Burravoe and would not be especially visually obtrusive.

Julie Lyth said she was "impressed" with what had been a "good presentation" as was Gossabrough resident David Robertson.

Mr Robertson added: "It was very well put, but it has thrown open a lot of questions. It also answered quite a few and I think in that respect it was very well done."

According to Mr Robertson the concerns among Gossabrough residents focused on how their community will prosper. "Financially I wonder how we will fare and that is one question that will have to be addressed. The estate would need to have a say."

"There seems to be money for the Burravoe crofters and they need to define who is going to benefit. Is it going to be Burravoe only or the surrounding area? If the community is going to prosper I think it's a very good idea. I would certainly give a lot of thought towards it. Anything to benefit communities is a very good idea."

"Absolutely it is going to be very visual, but I think we do have to move with the times. Obviously certain folk will have reservations, but I think as a whole the Burravoe community is behind it, certainly at the moment."

Burravoe couple Ruby and Jim Christie said that the "jury was very much still out" over the project and there were many factors such as the impact of double-carriage roads through the hills to consider.

Alec Jamieson of Burravoe said: "I am very much in favour of it. The south end of

Yell is so desperate for diversification of the economy and work of any kind. We need the diversification and employment that bigging roads and opening quarries will bring."

SIC estate operations executive manager Carl Symons, who was in Yell "acquainting himself with the project" along with carbon reduction officer Alan Grieve, said he had formed a "fairly positive" opinion.

He said: "It is good to see what communities are doing and good to support communities in their endeavours." He added that the likes of the windfarm "absolutely would fit positively with the SIC long-term carbon plan."

He added: "If we looking for a brighter future for Shetland we must look at all types of renewable resources. This is one of the mix. The simple fact is we still have an awful lot of wind."

Environment and transport committee chairman Michael Stout said: "At this stage from my perspective it is impossible to say whether I am in favour of this or not." He said that big issues like the interconnector were still more of a concern for him.

Environment vice-chairman Steven Coutts, who is also on the planning committee said: "I welcome the Peel public consultation exercise and in particular the 3D model tour that gave house holders the chance to visualise the plans from their doorstep."

"I was impressed by the quality of the model, without expressing my view on the project prior to submission of application for consent."

Billy Fox, the deputy leader of Shetland Islands Council and ex-chairman of anti-Viking Windfarm group Sustainable Shetland, declined to comment as he is a member of the planning committee.



Yell folk welcome wind farm plans

Thursday, 23 April 2015 | Written by Hans J Marter

Tweet Recommend Share 24



Bernadette Barry of Peel Energy: 'made very welcome in Yell' - Photo: Hans J Marter/ShetNews

RENEWABLE energy firm Peel Energy hopes to have a 70 megawatt wind farm exporting electricity from the Shetland island of Yell within five years.

The Manchester-based company said they were confident a £600 million interconnector would be built by then to transport power from Shetland to the UK mainland.

Peel Energy recently bought the interests in the Beaw Field wind farm from German firm Enertrag, who pulled out of the project last year.

After a two day consultation on the island, development manager Bernadette Barry said they had been encouraged by the response from local people.

Unlike the experience of the 103 turbine Viking wind farm to be built on Shetland's mainland, which has aroused bitter opposition, the Yell project appears to have been welcomed by residents.

Barry said they were considering two ways of generating the capacity of 70 megawatts by either using 20 very large turbines measuring 145 metres in height, or up to 28 slightly smaller turbines.

She added that they were confident there would be an agreement on building an interconnector within the next 12 months.

More than 100 local people visited the two public exhibitions held in Burravoe and Mid Yell where three company representatives were on hand to answer questions.

Barry said the company wanted to work with the community on the project design and the best way of providing community benefit.

She said up to £375,000 will be up for grabs every year for community councils and other community groups.

The company is also encouraging islanders to invest directly in the project and receive a share of the profits.

"We have been made very welcome in Yell and the responses from people I have been speaking to over the last two days have broadly been very positive," Barry said.

"People seem to be very much in favour of the project, and we have received some really helpful feedback on the design options.

"We will be able to feed that back into the process and will come back at the end of the year with a more fixed design."

She added that the company believed it was "up to the communities to decide how the fund or scheme goes ahead".

To assist this process, they will be promoting community dialogue and provide any guidance and help based on similar schemes they have operated in the past.

Barry said that some aspects of building a wind farm on Yell would be easier than on the mainland as turbines could be shipped in directly to the island or nearby Sullom Voe.

Unst resident Gordon Thomson said the proposed wind farm appeared to be well sited within the topography of the Burravoe Estate.





Intro to Peel Postcard

Appendix 3







Beaw Field Wind Farm, Yell Important Update



The proposed Beaw Field Wind Farm on Yell in the Shetland Islands, has recently been taken over by Peel Energy, one of the UK's foremost renewable energy companies and part of The Peel Group.

You can find out more about Peel Energy at www.peelenergy.co.uk



What will happen next?

We are currently in the process of carrying out detailed technical and environmental studies on the site. We will shortly begin consulting with you and are keen to learn as much as possible to ensure the development has minimal impact and maximum benefit for local communities.

Approximate Site Location



© Crown copyright 2015 OS 100018033

Expected Consultation Milestones

Spring 2015: Meetings with local community to introduce plans for Beaw Field Wind Farm

Autumn/Winter 2015: Second set of public exhibitions to present final design

Q1 2016: Submission of full planning application

What you can expect from Peel Energy?

- Open and honest communication
- Regular updates and on-going dialogue
- Long-term commitment to the local area of Yell and wider Shetland archipelago
- Maximum impact from community benefit scheme
- Creative ways of ensuring tangible economic benefit

**If you have any questions please contact
Bernadette Barry at bbarry@peel.co.uk**

You can find out more about Peel Energy at
www.beawfieldwindfarm.co.uk





Proposal of Application Notice

Appendix 4





Energy

Beaw Field Wind Farm Proposal of Application Notice (PAN)

April 2015





Beaw Field Wind Farm, Yell, Shetland Islands Proposal of Application Notice (PAN)

Contents

1. Introduction.....	3
2. Submission of the PAN	3
3. Project Description	3
4. The Applicant.....	4
5. Public Exhibitions.....	4
6. Other Activity.....	5
7. Contact Us	5
Appendix A	7



1. Introduction

This Proposal of Application Notice (PAN) was submitted by Peel Wind Farms (Yell) Ltd (Peel) to Shetland Island Council on 13th April 2015 in reference to the company's proposed Beaw Field Wind Farm near Burravoe on Yell. This document details and reports on the consultation process that Peel plans to undertake.

Although it is likely that the full planning application will be submitted to the Scottish Government under S.36 of the Electricity Act 1989, Peel believes it is important to ensure that Shetland Islands Council, as a statutory consultee, is made fully aware of the company's intentions regarding public consultation to ensure this meets with the local authorities approval. Peel would also welcome input from Shetlands Isles Council and other interested parties on the content of this PAN.

Peel believes strongly in a community focussed approach to all of its developments and will seek to reach and exceed consultation requirements outlined for Major and National developments.

Peel aims to:

- Improve the quality of the Beaw Field proposal through meaningful two-way dialogue;
- Facilitate a constructive and meaningful consultation process;
- Provide information and resources to assist local residents in understanding the benefits and impacts of the proposed Beaw Field Wind Farm.

2. Submission of the PAN

Copies of this PAN have been sent to:

- Yell Community Council
- All elected members of Shetland Islands Council
- Alistair Carmichael MP
- Tavish Scott MSP
- Scottish Natural Heritage (SNH)
- Scottish Environmental Protection Agency (SEPA)
- RSPB
- Highlands & Islands Enterprise

Copies will also be made available at our exhibitions.

3. Project Description

It is estimated that Beaw Field Wind Farm could accommodate up to 28 wind turbines, although it is recognised that the number may change due to technical, environmental and commercial constraints. It is anticipated that the proposed wind farm will comprise the following:

- Up to 28 three-bladed horizontal axis wind turbines of up to 145m tip height, nominally rated at between 2.5 – 3.5 MW,



- at each turbine, associated low to medium voltage transformers and related switchgear,
- turbine foundations,
- hard-standing areas for erection cranes at each turbine location,
- a series of on-site tracks,
- a site access route from the main road network to the south of the site,
- borrow pits,
- sub-station compound containing a control building,
- an on-site electrical and control network of buried cables,
- a temporary construction compound and
- a temporary guyed meteorological mast to be used for detailed wind definition and wind farm commissioning/acceptance testing.

The Study Area is shown below in figure 1.

4. The Applicant

Peel Energy is at the forefront of delivering low carbon energy for the UK and believes that a mix of low-carbon technologies is the only way to meet the UK's growing energy needs. Peel has a balanced portfolio in generation or development including wind, tidal and hydro power, and biomass.

Peel Energy is a division of The Peel Group, one of the leading infrastructure, real estate and investment enterprises in the UK. Peel's diverse network of businesses ranges from ports to airports; land to leisure; media to hotels; wind farms to shopping centres, and a portfolio of investments in major public companies.

5. Public Exhibitions

Peel Energy intends to hold at least one public exhibition prior to the submission of the Full Planning Application to the Scottish Government.

Our first exhibitions will take place on:

- 21st April – 2-7pm at the Burravoe Public Hall
- 22nd April – 3-8pm at the Mid Yell Public Hall

Representatives of Peel Energy will be available to answer questions from members of the public, elected Councillors, local businesses, council officials and any others who attend.

Also available at the exhibition will be:

- Additional information about Peel Energy.
- More about renewable energy and wind power in particular.
- Maps of the proposed turbine layout for the Beaw Field Wind Farm.
- A 3D computer simulation of the proposed wind farm allowing people to see what the wind farm will look like from any part of the local area.
- Outline and possible ideas for models of how the community benefit associated with the development might be managed and how this could benefit the local area.



Peel will also provide feedback forms at the exhibition to allow interested parties to provide their views on wind farms generally and to provide their comments on the proposed layout of the Beaw Field Wind Farm. These responses will feed into the final design iteration prior to the submission of the Full Planning Application to the Scottish Government.

All exhibitions will be advertised in the Shetland Times at least seven days prior to the exhibitions taking place and notices will also be displayed in local shops and post offices. A press release will also be issued to local media before the exhibitions take place advising of the details.

Community newsletters including information about the proposed layout and the planned exhibitions will be sent to each property on Yell.

6. Other Activity

In addition to our exhibitions, Peel Energy will also undertake the following community consultation activity:

- A regularly updated campaign website will be established at www.beawfieldwindfarm.co.uk. This will also provide phone and email contact details,
- Yell Community Council will be offered at least one presentation by Peel Energy,
- Discussions will be held with the local MP and MSP,
- Individual meetings will be offered with all North Isles Ward Councillors,
- Peel will seek to meet all of those who receive a copy of this PAN prior to submission of the Full Planning Application,
- Letters will be sent to stakeholders who receive a copy of this PAN at key points in the planning process including:
 - Prior to public exhibition
 - At submission of Full Planning Application
- A Pre-Application Consultation (PAC) Report will be submitted to Shetland Islands Council and Scottish Government at the time of the Full Planning Application.

The table shown in Appendix A sets out how Peel plans to implement these consultation methods during the Beaw Field Wind Farm pre application consultation period.

7. Contact Us

If you have any queries in relation to the Beaw Field wind Farm please contact us.

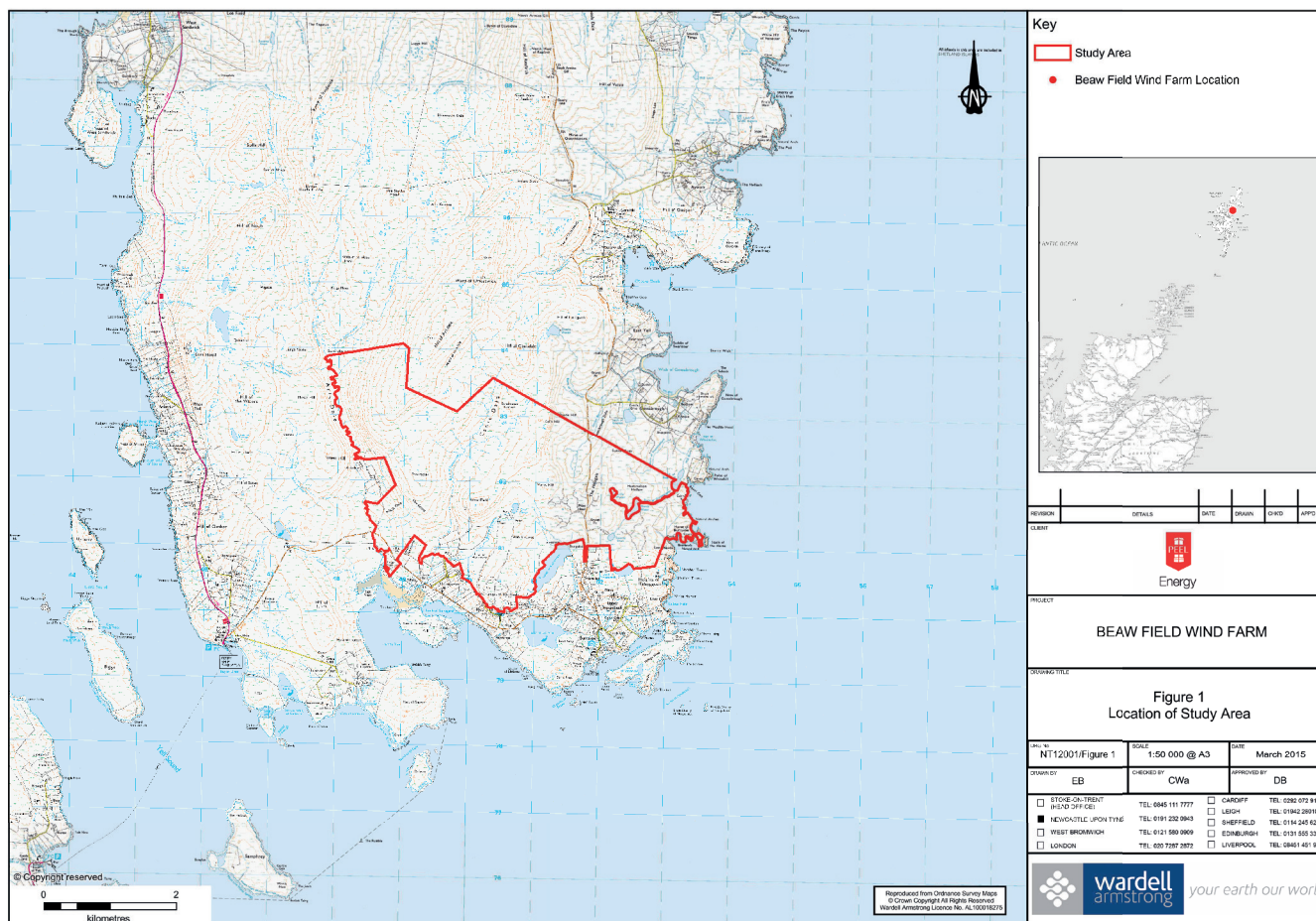
Bernadette Barry

Peel Energy
The Dome
Trafford Centre
Manchester
M17 8PL

bbarry@peel.co.uk

0161 629 8361





Appendix A

ACTIVITY	STAKEHOLDERS	INFORMATION	EXPECTED DATE
Planning Meetings	Shetland Isles Council (SIC) ECDU	Peel will meet with SIC and the ECDU following the submission of a scoping report. Peel will also request a list of bodies from the SIC with whom to engage in order to supplement the list prepared by Peel.	Spring 2015
Meetings and Presentation		Peel will consider all requests for meetings and presentations. The aim of these meetings will be to provide information on the development to ensure key stakeholders can discuss and comment on the proposed development.	2015
Community Council Meetings	• Yell Community Council (YCC)	Peel will provide a copy of this PAN to Yell Community Council. Peel will seek to present to YCC at one or more of their monthly meetings. The aims of the presentation will be to: <ul style="list-style-type: none">Introduce Peel and the project teamProvide brief details on the proposalDiscuss the proposed consultation plan and seek feedback on the methods of consultation proposed.	2015
Public Exhibitions	All	Peel plans to hold at least one exhibition event at the Burravoe community hall. The events will be advertised at service points in the local vicinity and via newspaper advert at least 7 days prior to the first event. The aim of the exhibition events will be to introduce the project and begin a process of formal consultation in order to open up two way dialogue with the communities surrounding the proposed development.	April 2015
Meetings	Statutory Stakeholders	As part of the Environmental Impact Assessment (EIA) process, as set out by the Town and Country Planning (Environmental Impact Assessment) Regulations 1999 Peel will engage with statutory consultees and technical stakeholders, including Scottish Natural Heritage (SNH) and Scottish Environmental Protection Agency (SEPA).	April 2015 onwards
Newsletters	All	Regular project updates will be communicated via a series of newsletters which will be sent to everyone on Yell. The newsletter will also be available for download from the project website.	2015
Emails/ Letters	All	To share necessary information with the local community. Peel will keep a database of all stakeholders in accordance with the Data Protection Act (DPA) 1998. Peel will respond in a timely manner to all queries.	2015
Website	All	Peel will create a dedicated project website [www.beawfieldwindfarm.co.uk] which will provide information about the proposed development, news, a questionnaire and information on the consultation process. The website will become live in March 2015 and will be regularly updated.	2015



		Town and Country Planning (Environmental Impact Assessment) Regulations 1999 Peel will engage with statutory consultees and technical stakeholders, including Scottish Natural Heritage (SNH) and Scottish Environmental Protection Agency (SEPA).	
Newsletters	All	Regular project updates will be communicated via a series of newsletters which will be sent to everyone on Yell. The newsletter will also be available for download from the project website.	2015
Emails/ Letters	All	To share necessary information with the local community. Peel will keep a database of all stakeholders in accordance with the Data Protection Act (DPA) 1998. Peel will respond in a timely manner to all queries.	2015
Website	All	Peel will create a dedicated project website [www.beawfieldwindfarm.co.uk] which will provide information about the proposed development, news, a questionnaire and information on the consultation process. The website will become live in March 2015 and will be regularly updated.	2015



Prominent Local Stakeholders

Appendix 5





Title	First Name	Surname	Suffix	Constituency / Position
Rt. Hon	Alistair	Carmichael	MP	Orkney & Shetland
	Tavish	Scott	MSP	Shetland
	Fergus	Ewing	MSP	Minister for Energy, Enterprise & Tourism
Cllr.	Robert	Henderson		North Isles
Cllr.	Steven	Coutts		North Isles
Cllr.	Gary	Cleaver		North Isles
Cllr.	Frank	Robertson		Shetland West
Cllr.	Andrea	Manson		Shetland North
Cllr.	Drew	Ratter		Shetland North
Cllr.	Gary	Robinson		Shetland West
Cllr.	Davie	Sandison		Shetland Central
Cllr.	Billy	Fox		Shetland South
Cllr.	Peter	Campbell		Lerwick South
Cllr.	Malcolm	Bell		Lerwick North
Cllr.	Mark	Burgess		Shetland Central
Cllr.	Alastair	Cooper		Shetland North
Cllr.	Allison	Duncan		Shetland South
Cllr.	Cecil	Smith		Lerwick South
Cllr.	George	Smith		Shetland South
Cllr.	Theo	Smith		Shetland West
Cllr.	Michael	Stout		Lerwick North
Cllr.	Amanda	Westlake		Lerwick South
Cllr.	Jonathan	Wills		Lerwick South
Cllr.	Allan	Wishart		Lerwick North
Cllr.	Vaila	Wishart		Shetland Central
Mrs	Julia	Lyth		Clerk, Yell Community Council
Mrs	L	Odie		Chairman, Yell Community Council



Stakeholders Letters

Appendix 6





Peel Energy Limited, Peel Dome, The Trafford Centre, Manchester, M17 8PL
TEL: 0161 629 8200 FAX: 0161 629 8330 www.peel.co.uk



XXXXXXXXXXXXXXXXXXXX
XXXXXXXXXXXXXXXXXXXX
XXXXXXXXXXXXXXXXXXXX
XXXXXXXXXXXXXXXXXXXX

XXX March 2016

Dear xxxxxxx,

Beaw Field Wind Farm Application Lodged

I am writing to inform you that Peel Energy has submitted a planning application for a 17 turbine wind farm on the island of Yell. We lodged the application with the Scottish Government to develop the Beaw Field site near Burravoe on March XXXXX.

The proposed wind farm would have an installed capacity above 50MW which means the applications is not determined by the local authority, Shetland Island Council. Instead, as it is deemed a proposal of national significance an application for consent has been made to the Scottish Government.

As you may know Peel Energy acquired the rights to develop the Beaw Field wind farm last year and have since undertaken extensive community consultation. The purpose of this approach was to allow meaningful feedback from local community to influence the final layout of the wind farm.

I was delighted by the level of engagement and general positive response from the local people throughout the consultation process. During the consultation, local people were asked if they would prefer a smaller number of larger turbines, or a series of smaller turbines but in greater numbers. The community response coupled with the environmental and technical studies, led Peel to refine its proposal and submit a planning application to the Scottish Government for 17 turbines with a maximum height of 145m.

After our final round of consultation I was pleased by the strong public support for the project. I believe this a reflection of the input local people had on the project, resulting in the wind farm being both sensitive to the environment and of real benefit to the local community.

The results from the final round of public consultation on October 3rd and 4th showed where the outline of the proposal we have submitted was put to the community was:

- 88% were in strong support of the wind farm
- 92% were in support of the modifications we made to the application

At our public exhibitions, the Peel team also spoke with many residents about the Community benefit fund and how best to use this. The feedback forms completed on both days confirmed the majority of residents would like an annual fund used to support local projects and we will be

A member of the Peel Holdings (Land and Property) group
Registered Office: Peel Dome, The Trafford Centre, Manchester, M17 8PL Registered Number 5683935 England & Wales



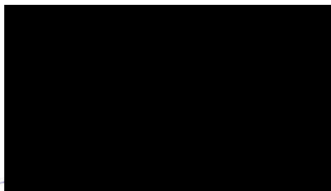


continuing to work with the community of the details of this during the consideration of the application by the Scottish Government and statutory consultees.

All of the submission documents, including the technical studies and the report on the consultation undertaken with the local community are available on the project website at www.beawfieldwindfarm.co.uk.

I will ensure that you are kept up to date with any further developments regarding the development but, in the meantime, if you need any more information or if I can be of any assistance at all then please do not hesitate to contact me. .

Yours sincerely,



Bernadette Barry
Development Manager





Peel Energy Limited, Peel Dome, The Trafford Centre, Manchester, M17 8PL
TEL: 0161 629 8200 FAX: 0161 629 8330 www.peel.co.uk



Name
Address 1
Address 2
Postcode

date

Dear Mr/Ms/Mrs -----

Second Round of Beaw Field Wind Farm Exhibitions

I am writing to you regarding a second set of public exhibitions Peel Energy is holding concerning our potential wind farm at Beaw Field in the south east of Yell.

Peel Energy acquired the rights to develop the Beaw Field Wind Farm earlier this year and is now in a position to present a final design prior to the submission of a planning application to the Scottish Government. Previous consultations in April of this year proved very successful, with 82% of attendees indicated they were supportive of our plans for the site.

Based on our work so far, we are proposing 17 turbines up to a maximum height of 145m. Because of the size of this development, the application will be determined by the Scottish Government.

The exhibitions will take place over two days as follows:

- **Wednesday 7th October** – Burravoe Public Hall, 2 – 7pm
- **Thursday 8th October** – Mid Yell Public Hall 2 – 7 pm

Representatives of Peel Energy will be available to answer questions from members of the public, elected Councillors, local businesses, council officials and any others who attend.

Other Information available at the exhibition will include:

- More about renewable energy and wind power in particular.
- Maps of the proposed wind farm showing locations of turbines, and associated infrastructure.
- A 3D computer simulation of the proposed wind farm allowing people to see what the wind farm will look like from any part of the local area.
- Feedback and analysis gained from the first round of public consultations.

If for any reason you are unable to make the proposed times, we would be happy to meet you for a separate meeting in Shetland sometime in October 2015 if you might be free then instead.

A member of the Peel Holdings (Land and Property) group
Registered Office: Peel Dome, The Trafford Centre, Manchester, M17 8PL Registered Number 5683935 England & Wales





I hope you will be able to make the exhibition but if you need any more information or if I can be of any assistance at all then please do not hesitate to contact me. There is also information available on the project website at www.beawfieldwindfarm.co.uk.

Yours sincerely,



Bernadette Barry
Development Manager



Peel Energy Limited, Peel Dome, The Trafford Centre, Manchester, M17 8PL
TEL: 0161 629 8200 FAX: 0161 629 8330 www.peel.co.uk



Rt. Hon Alistair Carmichael MP
171 Commercial Street
Lerwick
ZE1 OHX

7 April 2015

Dear Mr. Carmichael

Beaw Field Wind Farm Exhibitions

I am writing to you regarding a set of public exhibitions Peel Energy is holding concerning our potential wind farm at Beaw Field in the south east of Yell.

Peel Energy has recently acquired the rights to develop the Beaw Field Wind Farm and this is the first of many stages of public consultation and environmental studies that we are undertaking prior to the submission of a full planning application.

We will shortly be submitting a Proposal of Application Notice (PAN) to Shetland Islands Council and a scoping request to the Scottish Government which indicates that that the site could accommodate a maximum of 28 wind turbines up to a height of 145m.

The exhibitions will take place over two days as follows:

- Tuesday 21st April – 2-7pm – Burravoe Public Hall
- Wednesday 22nd April – 3-8pm – Mid Yell Public Hall

Representatives of Peel Energy will be available to answer questions from members of the public, elected Councillors, local businesses, council officials and any others who attend.

Other Information available at the exhibition will include:

- More about renewable energy and wind power in particular.
- Maps of the proposed turbine layout for the Beaw Field Wind Farm.
- A 3D computer simulation of the proposed wind farm allowing people to see what the wind farm will look like from any part of the local area.
- Outline and possible ideas for models of how the community benefit associated with the development might be managed and how this could benefit the local area.

Peel Energy is focused on ensuring that local people get maximum benefit from the development and we hope to hear suggestions during the exhibitions as to how this can be achieved.


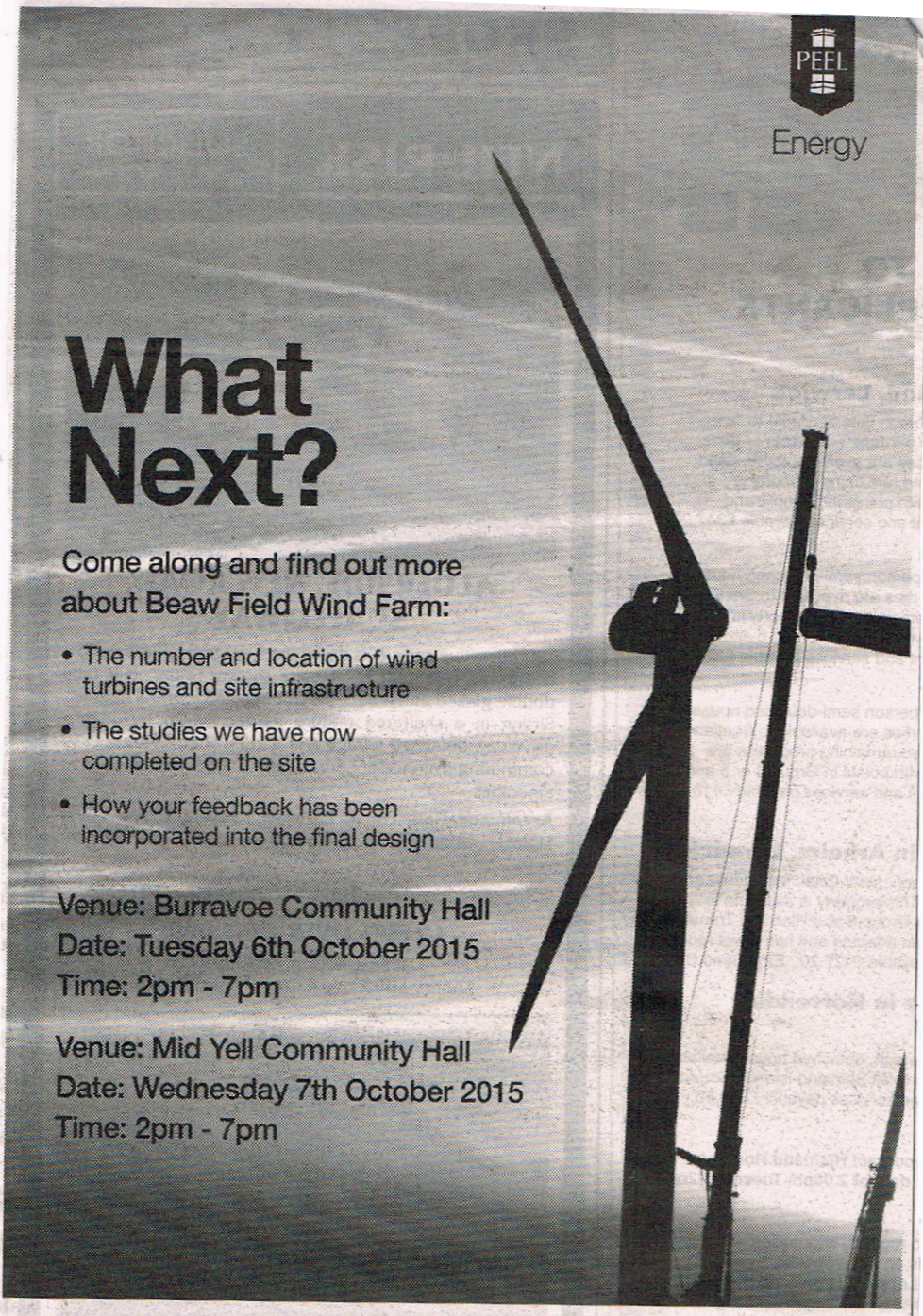




Public Exhibition Adverts

Appendix 7





Energy

What Next?

Come along and find out more about Beaw Field Wind Farm:

- The number and location of wind turbines and site infrastructure
- The studies we have now completed on the site
- How your feedback has been incorporated into the final design

Venue: Burravoe Community Hall
Date: Tuesday 6th October 2015
Time: 2pm - 7pm

Venue: Mid Yell Community Hall
Date: Wednesday 7th October 2015
Time: 2pm - 7pm

www.beawfieldwindfarm.co.uk





Energy

Let us know what you think

Please join us to find out
more about the project and
ask any questions about the
Beaw Field Wind Farm plans

Venue: Burravoe Public Hall

Date: Tuesday 21st April 2015

Time: 2pm - 7pm

Venue: Mid Yell Public Hall

Date: Wednesday 22nd April 2015

Time: 3pm - 8pm

www.beawfieldwindfarm.co.uk





**Beaw Field
Wind Farm**

Please join us at our
Public Consultation

Tue 21st & Wed 22nd April


Energy

BY Great is the Truth and it will Prevail Tuesday, 2
ik

Shetland News

**Beaw Field
Wind Farm**

Please join us at our
Public Consultation

Tue 6th & Wed 7th October


Energy





Exhibition Boards

Appendix 8





Energy

Welcome

Beaw Field Wind Farm

Welcome to this community consultation event. Peel Energy has recently taken over the proposed Beaw Field Wind Farm near Burravoe on Yell in the Shetland Islands and is proposing to build up to 28 turbines. The aim is to provide a clean and secure source of electricity and ensure long lasting and tangible benefits for local communities and the surrounding environment.



First Stage

This is the first stage of a consultation process leading up to the submission of a Full Planning Application. At this event we want to explain our plans and seek your views on:

- Wind energy and other renewables
- The design of the scheme
- How Beaw Field can deliver real economic benefits to Yell and the wider Shetland Islands
- How any community benefit fund associated with the scheme could be spent
- Whether you are interested in community ownership



We hope you find this exhibition interesting and we would ask that you fill in a feedback form before you leave so we can take your thoughts on board before we finalise our designs. Please speak to any of the team that are here and ask any specific questions you might have.

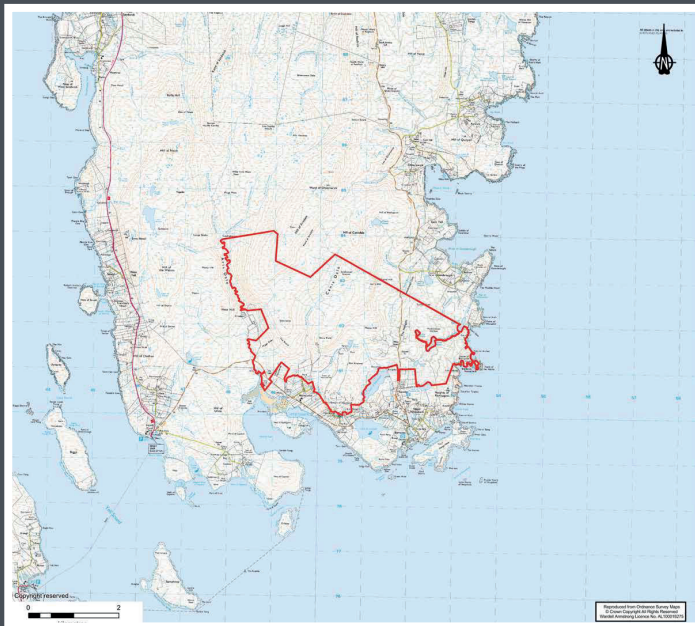
www.beawfieldwindfarm.co.uk



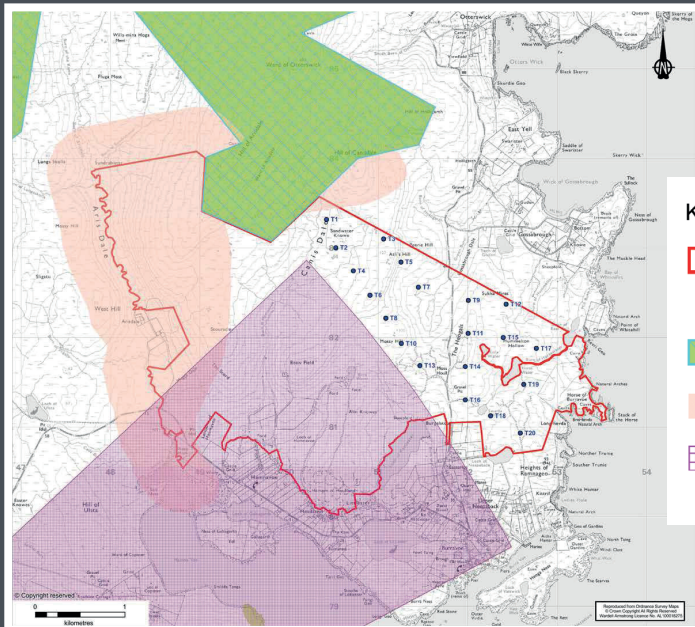


Energy

Beaw Field Wind Farm



Study Area



Key

- Study Area
- T1 to T20 Indicative Turbine Layout
- Otterswick and Graveland SPA
- Area of ornithological interest adjacent to SPA
- Obstacle Limitation Surface Scatsta Airport (NATS)

Key Constraints

www.beawfieldwindfarm.co.uk





Energy

Overcoming Issues

Since taking on the site at Beaw Field, we have been conducting detailed studies to assess its feasibility.



Access

We must ensure that roads are of sufficient size and quality to allow access for the turbines to the site. We will also need to consider how best to get all of the equipment on to Shetland by sea.



Noise

Our final design will take account of the predicted noise of our proposed turbines. We must work within strict international guidelines to ensure we do not cause disruption to people in the local area.



Ornithology

There have been over two years of bird surveys conducted on the site to date. This has influenced our design and we will ensure that bird life both on and near the site is protected.



Visual Impact

Whilst the turbines will be visible from parts of Yell, we will be speaking individually to those closest to the site to gather feedback on the design and address any concerns we can.



Grid Connection

As people on Shetland know, there is an on-going discussion regarding the construction of a grid connection to the Scottish mainland. We are part of this discussion with other stakeholders and are confident of a positive outcome.



Aviation

We will need to design a scheme, in consultation with Scatsta and other aviation stakeholders, which will have no impact upon aviation safety.

www.beawfieldwindfarm.co.uk





Energy

Now and Next...

What stage are we at?

Peel Energy has submitted an initial scoping report to the Scottish Government and Shetland Islands Council (SIC) for a wind farm of up to 28 turbines, with a maximum height of 145m. This means it is highly likely that a decision on whether to grant approval for the development will be made by the Scottish Government, although SIC will be required to give their opinion on the development as well.

Depending on the outcome of the public consultation, reports from our environmental and technical experts and our studies of potential turbines, we would expect one of two scenarios to form our final planning submission:

- **A smaller number of turbines up to a maximum height of 145m**
- **A number of turbines closer to 28 but with a height smaller than 145m**

By submitting the scoping report in the way we have, we hope to have maximum flexibility to ensure the proposal we submit is fit for purpose and can take full account of the opinions of local people as well as our expert team of advisers.

What happens next?

This exhibition is the first step in our consultation process with local communities prior to the submission of a Full Planning Application to the Scottish Government. The next steps will be:

- April 2015** Introductory exhibitions
- May – September 2015** Ongoing discussions with local people, elected politicians and officials from SIC and Scottish Government
- Q4 2015** Second set of public exhibitions including final draft design of Beaw Field Wind Farm
- Q1 2016** Submission of Planning Application to Scottish Government
- Late 2016** Expected determination of application
- 2019** Construction of wind farm begins
- 2020** Beaw Field Wind Farm operational

www.beawfieldwindfarm.co.uk





Energy

Benefits to the Local Area

The process of constructing a wind farm can bring many direct benefits both to Yell and the wider Shetland Island archipelago. These include:



Economic Benefits

Peel Energy is committed to using local contractors and suppliers wherever possible during the development, construction, operation and decommissioning of Beaw Field Wind Farm.



Peat Restoration

Our studies have shown that some of the peat fields near the site are deteriorating. During the construction of the wind farm some of this will be restored, protecting this valuable resource for generations to come.



Habitat Restoration

As part of the process of developing the site, habitats will be managed to encourage wildlife and fauna which we hope will flourish.



Roads

Improved access to the area around the site will be required to bring in turbines and equipment. This will necessitate the upgrading of local roads which will help improve access for local people in to the future.

www.beawfieldwindfarm.co.uk





Energy

Why Renewables?



Climate Change

Climate change is the long-term change in average weather conditions, including temperature, precipitation and wind.

According to the United Nations Intergovernmental Panel on Climate Change (IPCC), which is comprised of the world's leading scientific experts in the field of climate change, our climate is undergoing dramatic changes as the direct result of greenhouse gas (GHG) emissions from human activity. One of the primary activities associated with the production of GHG's is the burning of fossil fuels for energy generation.

The UK has a legally binding commitment to cut greenhouse gas emissions by 80% by 2050.



Security of Supply

20% of the UK's generation capacity will close in the next few years. Additional wind energy would help to secure the UK energy supply and reduce the need to rely on imported fuels and energy.

47% of the UK's energy is dependent on imports and 40% of our coal is being imported from Russia.



Fossil Fuels

Fossil fuels were formed millions of years ago when plants, animals and other creatures died and were buried under the earth. Their remains gradually changed over the years due to heat and pressure in the earth's crust and formed coal, oil and natural gas.

Fossil fuels have long served as the main source of energy for almost all practical purposes, and their use has increased exponentially since the industrial revolution. Carbon that has been sequestered in these stores is released upon using them as fuel which contributes towards climate change.

The UK has a legally binding commitment to reduce carbon emissions to 60% of 1990 levels by 2030.



Price Volatility

Much of the UK's imported energy comes from countries a great distance away and which are susceptible to changing political circumstances which can radically affect prices.

Renewable resources can help insulate the UK from some of the world energy price volatility. It is anticipated that by 2020 onshore wind could be the UK's lowest cost electricity source.

www.beawfieldwindfarm.co.uk





Energy

Wind Technology

Scotland is one of the windiest countries in Europe with 25% of Europe's wind resource, making it ideal for harnessing this natural resource to generate power. Wind speeds recorded at existing wind farms on Shetland are amongst the highest in Scotland, increasing the attractiveness of building more sites on the islands.

Well sited wind farms have a number of benefits:



Clean

No harmful emissions during generation.



Reliable

Typically produce electricity for over 96% of the year.*



Efficient

Existing turbines on Shetland have a capacity factor of 52%, almost double the UK average of 27.8%.



Recyclable

Turbines can be removed and land restored at end of life. Most modern turbine components can be recycled.



Cheap

No direct fuel costs and with improving technology, wind is increasingly competitive against coal and gas.



Quick

Easy to assemble and dismantle compared to traditional power stations.

*Seaforth Wind Farm

www.beawfieldwindfarm.co.uk

