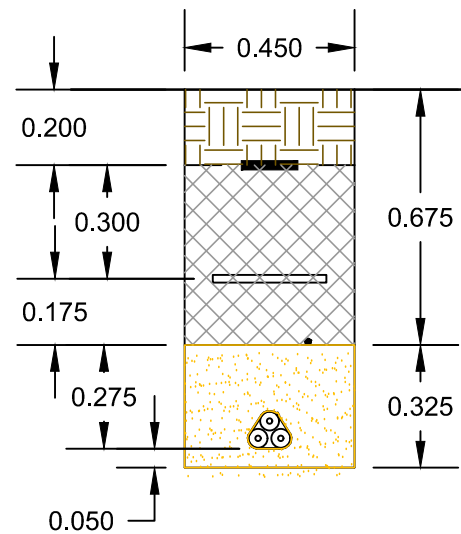


Typical cable trench cross section. Single cable run.



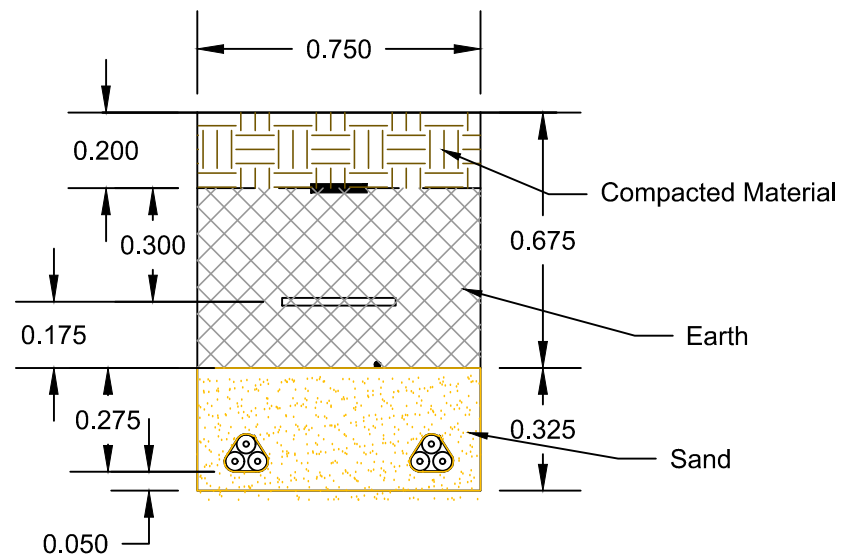
HV warning marker tape on top of backfill to trench.

As excavated material, compacted back into trench.

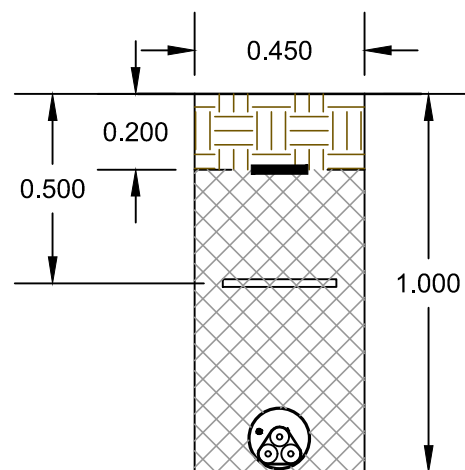
1 x 70mm CSA bare stranded copper wire earth laid on top of sand cover to HV cable.

Single HV circuit consisting of 3 x single HV voltage to be confirmed with sub-station in case of 33 KV the cable trenches are slightly wider. Cable placed in trefoil formation and laid on sand bedding with sand cover. Cable ties every 2m.

Typical cable trench cross section. Double cable run.



Typical cable trench road crossing cross section.



Top of trench reinstated with topsoil.
HV warning marker tape on top of backfill to trench.
As excavated material, compacted back into trench.

Stock board cable cover.

1 x 70mm CSA bare stranded copper wire earth laid through duct with HV cable.

Single HV circuit consisting of 3 x single HV cable placed in trefoil formation and laid through 150mm diameter RIGI-DUCT. Cable ties every 2m.

Notes:

All dimensions are in metres unless otherwise stated.

Beaw Field Wind Farm



TITLE:

Cable Trench Detail

Figure 3.7

Scale: 1:20 @ A3

Date: 28/01/2016



This material has been reproduced from Ordnance Survey digital map data with the permission of the Controller of Her Majesty's Stationary Office.
© Crown copyright.
Licence Number 100018033

Ref: