


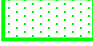


## Key

- Proposed Turbines
-  Landscape Character Type
-  Visual Compartments
-  Blade Tip ZTV
-  Predicted Area of Significant Effects on Landscape Character

LANDSCAPE CHARACTER TYPES within 10km:  
B1. Yell Peatland;  
B2. Rounded Moorland Hills;  
C3. Lunna Ness and Dragon Ness;  
E3. Coastal Crofting and Grazing Lands;  
F2. Nucleated Settlements;  
F5. Scattered Settlement/ Crofting and Grazing Lands;  
G. Coastal Edge.

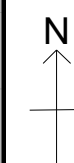
VISUAL COMPARTMENTS within 10km:  
C. Mid and North Yell;  
D. Colgrave Sounf;  
E. Yell Sound and South Yell;  
K Lunnasting, North Nesting,  
Whalsay and Out Skerries

NOTES:  
1. Zone of Theoretical Visibility (ZTV) has been generated using Ordnance Survey Terrain 50 digital terrain model, which does not take into account the screening effects of vegetation, buildings or other structures.

2. ZTV calculation has allowed for curvature of the earth's surface.

3. ZTV has been generated based upon an observer eye height of 2m above ground level.

## Beaw Field Wind Farm



## TITLE:

*Location of Significant Landscape Effects*

*Figure 7.12*

Scale: 1:125,000 @A3

Date: Jan 2016



This material has been reproduced from Ordnance Survey digital map data with the permission of the Controller of Her Majesty's Stationary Office  
© Crown Copyright  
Licence Number 100018033

Ref: