



Peel NRE
RE-ENERGISING NATURAL RESOURCES

Sustainability Plan

Our strategy for creating better places
for people and the environment

2023 - 2024

V2.2



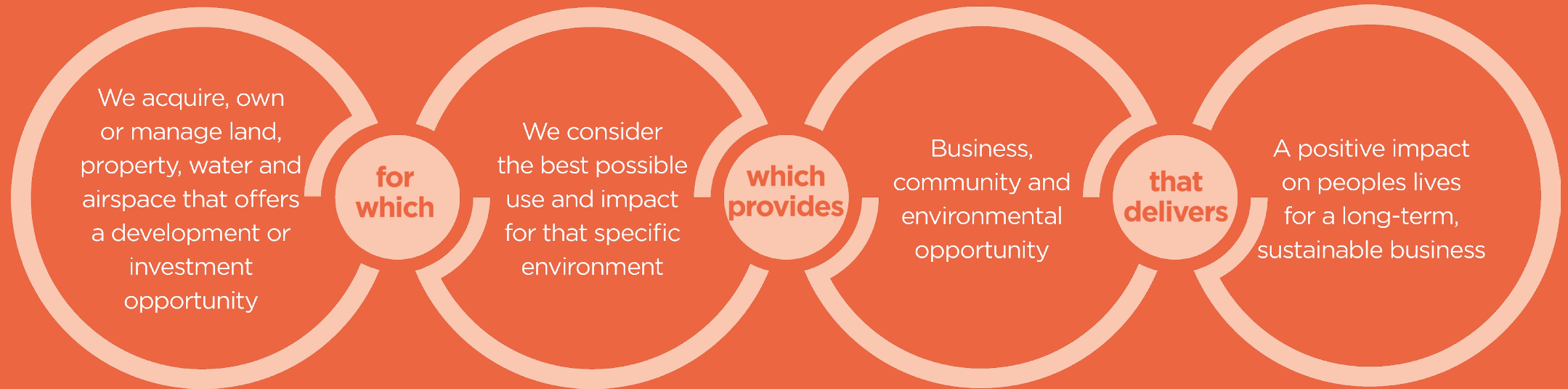


**Peel L&P
Realising
Possibility**

We devote our energy to accomplishing great things; not for their own sake, or ours, but for those who come after. Today, tomorrow and for generations to come. Our ambitions are for a more prosperous, sustainable future for all; where people and places are matched with the opportunity to be the very best they can be.

Our sustainability plan aims to help us meet the current needs of our business and stakeholders whilst keeping ahead of key trends to ensure we future-proof our activities. We are often the facilitator, with an in-direct impact on sustainability, and our ambitions can only be achieved by working together with partners to keep pace with key future trends.

**We see possibility.
We deliver transformation.**



Peel L&P model

Future trends identified by
the UK Green Building Council

The Past

Reasonable change of
pace

Regulation is the answer

Do less

Business as usual

It sits with the
sustainability team

The Future

Unprecedented instability

Business leadership is key

Do more

Breakthrough innovation

The mainstream own it



Climate
Change



Nature &
Biodiversity



Health &
Wellbeing



Resource
Use



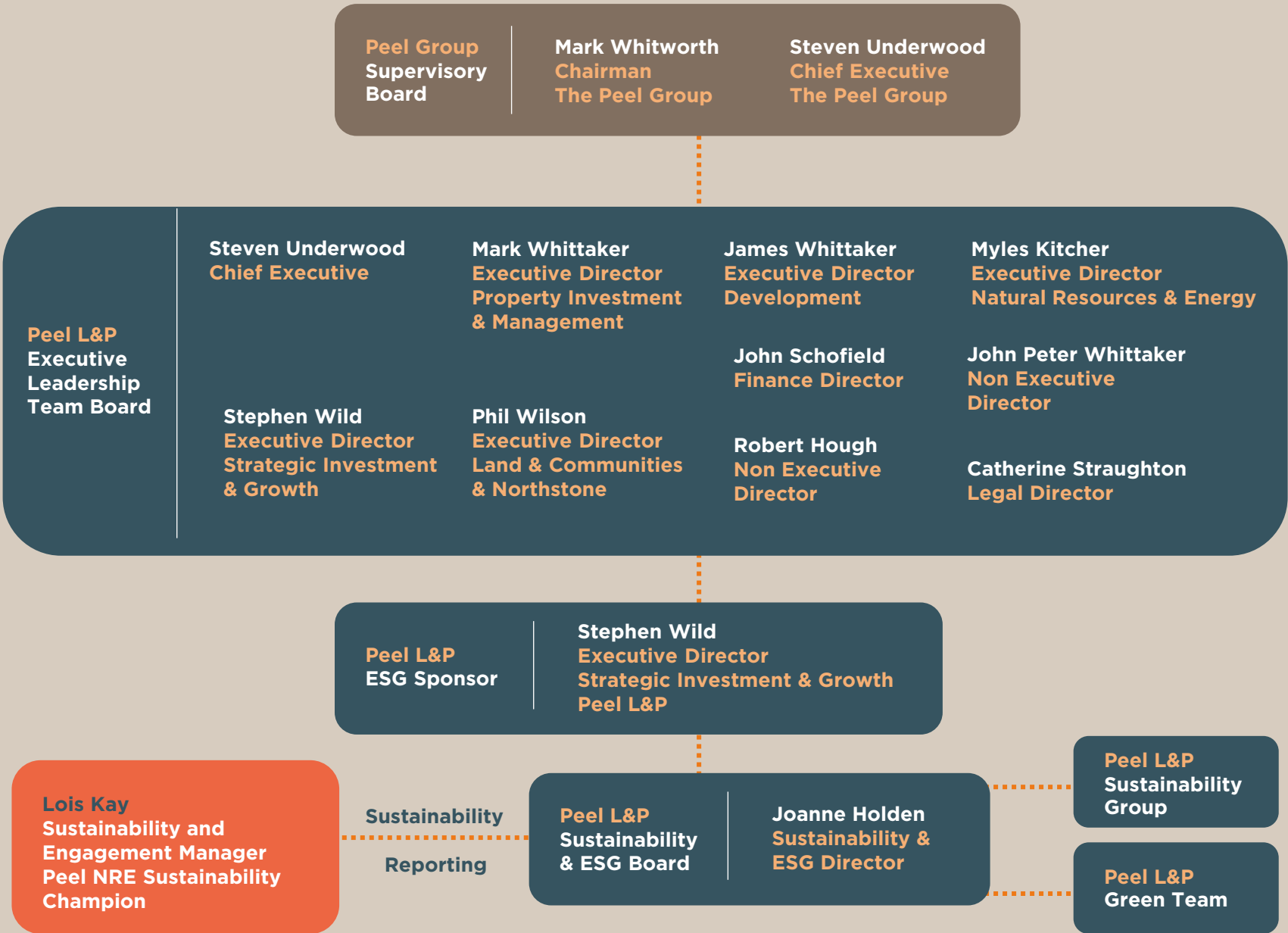
Socio-economic
Impact

Peel L&P on governance

At Peel L&P we recognise the responsibility we hold as a leader in regeneration projects, and we understand that this responsibility starts with a governance structure that involves our Executive and Senior Leadership Teams.

Our sustainability activities are reported quarterly by business unit to the Peel L&P Sustainability Board, which in turn reports quarterly to the Executive Leadership Team Board.

The Peel L&P Sustainability Group and the Green Team both engage our practitioners in the delivery aspects of sustainability matters. A network of Sustainability Champions and Energy Champions ensure sustainability is embedded in everyday thinking.



Sustainability Principles

From the three pillars of sustainability - balancing the economy, environmental responsibility and community needs - we have developed 7 Sustainability Principles.

To encourage the creation of highly sustainable, future-proofed destinations, we have developed the Principles for all our partners to seek to deliver in our development schemes. By setting a consistent approach across our developments and measuring progress, we can ensure our activities deliver liveability for whole communities, more sustainable individual sites and long-term custodianship.

1

Create opportunities for people to lead better, more prosperous lives

5

Strive to put more back into the natural environment than is taken out

2

Engage with local people to understand the needs of existing and future communities

6

Support the health and wellbeing of communities by creating beautiful, functional and well-used green public realm

3

Develop highly sustainable and smart built environments

7

Promote sustainable transport options for all

4

Embrace a low carbon energy strategy



8 DECENT WORK AND
ECONOMIC GROWTH



7 AFFORDABLE AND
CLEAN ENERGY



13 CLIMATE
ACTION



The United Nations Sustainable Development Goals (SDGs)

9 INDUSTRY, INNOVATION
AND INFRASTRUCTURE



11 SUSTAINABLE CITIES
AND COMMUNITIES



The UN's 17 SDGs, otherwise known as the Global Goals, were launched in 2015 and underpin our ambition to embed sustainability into our placemaking activities.

We support the principles of the SDGs and have started to look at how we can play our part in contributing to them.

We have prioritised the five that are most relevant to our business activities and recognise that none could be achieved without working in partnership with our stakeholders.



Peel NRE's UN SDG Commitments

Peel NRE, part of Peel L&P, is at the heart of the nation's activity around clean growth and the circular economy – helping the UK achieve net zero by 2050 and supporting the regions in their actions to achieve climate emergency targets.

With our partners we re-use, re-purpose and re-energise natural resources to develop and maintain vital infrastructure across the UK and are experts in renewable energies, district heating, waste to value, water management, materials management and electric vehicle charging.

7 AFFORDABLE AND CLEAN ENERGY



Ensure access to affordable, reliable, sustainable and modern energy for all

What does this mean?

Pursue innovation in energy production to provide sustainable heat and power sources for current and future generations.



Our Commitment:

We will continually explore innovation in energy production

Through our business areas, including renewable and low carbon waste management and energy production, we have the opportunity to work in partnership with investors, technology providers and businesses, together with the public sector, to provide bespoke real estate, infrastructure and operational solutions to benefit sustainable energy provision both in the regions we are based and nationally.

In Liverpool, our Mersey Heat energy service company (ESCO) is delivering a low carbon district heat network. Across the UK we have delivered over 180MW of onshore wind, including the 65MW Scout Moor wind-farm, and are currently

delivering a further 120MW on the Shetland Islands.

Our Protos Cheshire energy and resource hub leads the way in low carbon energy and waste management with the deployment of innovative technologies including the UK's first plastic-to-hydrogen facility, a 21.5MW biomass plant, a 49MW energy from waste plant in construction and a plastic park blueprint to revolutionise plastic recycling nationwide.

11 SUSTAINABLE CITIES AND COMMUNITIES



Make cities and human settlements inclusive, safe, resilient and sustainable

What does this mean?

Contribute towards making places for the economy, communities and nature to thrive.



Our Commitment:

We will develop our strategy for engagement with local communities and partners, and work across Peel L&P to promote the benefits of using recycled aggregates

Engagement and participation are integral to Peel NRE's approach to community consultation, being a good neighbour, and supporting economic and social growth of the regions in which we are based. Over the coming years, we will be building social value and net gain assessments into many of our projects to further this and create a place where all people feel welcome.



8 DECENT WORK AND ECONOMIC GROWTH



Promote sustained, inclusive and sustainable economic growth, full and productive employment and decent work for all

What does this mean?

Economic and skill growth, inclusive and engaging working environments.



Our Commitment:

We will support training, employment and local business opportunities through our activities

activities associated with the areas in which we work, and supporting the next generation of talent.

At Peel NRE, we have a strong track record in working with partners to deliver successful natural resources and energy projects, providing solutions and expertise to Government ministers, public and trade bodies and industry leaders. Thus, we are in a strong position to give back and support the regions in which we work with their carbon reduction and COVID-19 recovery plans over the coming years. As a newly formed business, bringing three divisions of Peel L&P together, we seek to continually expand through volunteering



9 INDUSTRY, INNOVATION AND INFRASTRUCTURE



**Build resilient infrastructure,
promote inclusive and sustainable
industrialisation and foster
innovation**

What does this mean?

Innovation in energy provision and waste management to support decarbonisation.

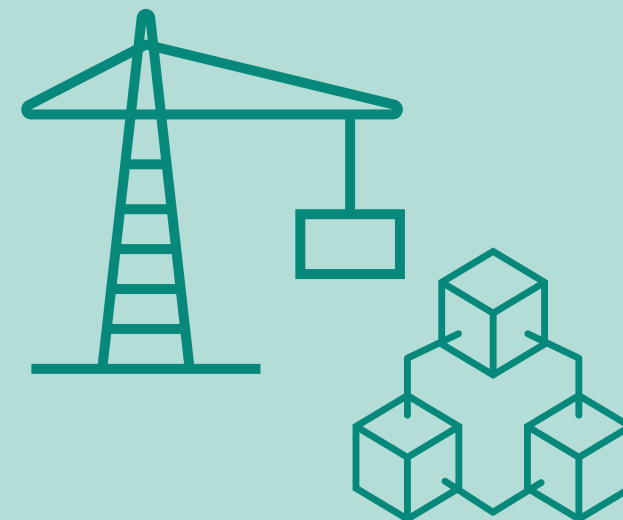


Our Commitment:

**Work with partners to explore
and implement innovation to
support national clean growth
and the circular economy**

Across Peel NRE, we provide time and resources to regional working groups focused on economic, energy and waste management resilience through cross- business collaboration.

Over the next 5 years, we look to bolster the nation's ability to deal with non-recyclable plastic and further development of district heat network projects.



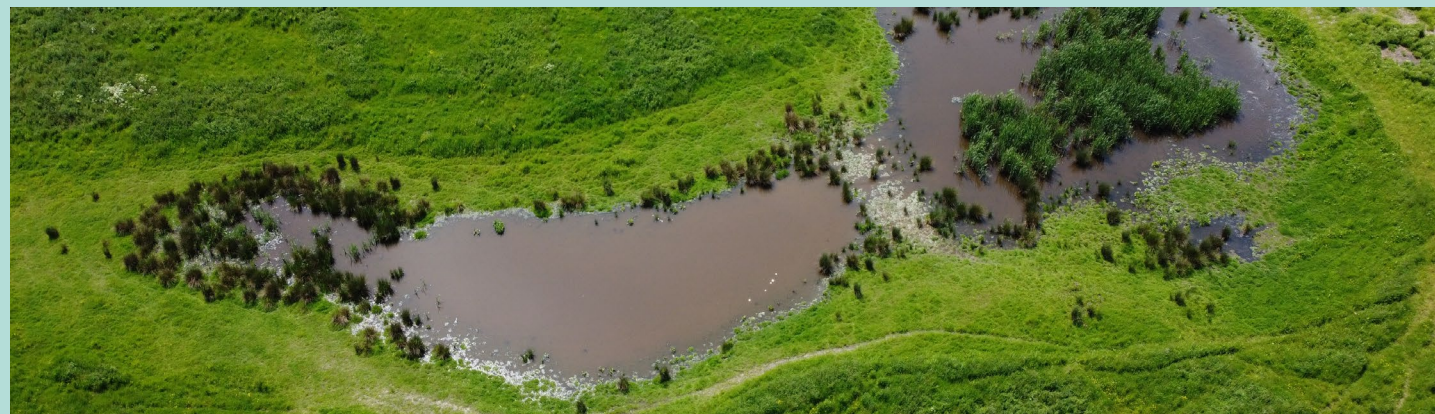
13 CLIMATE ACTION



Take urgent action to combat climate change and its impacts

What does this mean?

Acknowledging the climate and ecological emergencies in addition to NRE's work focussed on renewable and low carbon energy solutions. Understanding how we can reduce and mitigate against, as well as adapt for, the impact of climate change on our development sites.



Our Commitment:

We will support our colleagues to be carbon literate and understand the risks that climate change poses

To further our focus on climate resilience Peel NRE, as part of L&P, has joined Business Declares, acknowledging the urgency of the climate and ecological emergencies and our commitment to tackling them alongside like-minded businesses. We commit to developing our colleagues' skills and knowledge of climate change through carbon literacy training.

For our Protos Cheshire energy and resource hub, which is leading the way in low carbon energy and waste management through innovative technologies, we will undertake a Climate Risk Assessment in addition

to standard practice assessments. The Climate Risk Assessment will help us to identify climate-related risks associated with our assets, and integrate adaptation measures into our Asset Management Plans to ensure we adapt to the changes in climate we are like to experience up to 2060.

Targets

Our 5 commitments are underpinned by a range of specific targets, focussed on the sustainability issues that are most relevant to our business activities and associated stakeholders.

SDG 7: Affordable and Clean Energy

1 Year Targets

- Secure planning consent for the first grid-scale solar farm on the Isle of Man which could deliver up to 26MW of renewable energy to Manx consumers by 2024.
- Aim to submit a planning application for Peel Cubico Renewable's first UK solar farm and battery storage project at Frodsham, Cheshire with an installed capacity in excess of 100MW.

5 Year Targets

- Investigate the potential for Carbon Capture and Utilisation and Storage (CCUS) and connection of Protos into Hynet (hydrogen distribution network).
- Submission of planning applications to support delivery of up to 500MW of onshore wind and solar energy across the UK through our Peel Cubico Renewables joint venture partnership.
- Progress the installation of onsite solar PV on our commercial properties to support Peel L&P's target of 10% of energy to be self-generated from renewable sources by 2026.

SDG 11: Sustainable Cities and Communities

1 Year Target

- Promote the funding available through the Protos community benefit fund in at least four digital community newsletters.

5 Year Targets

- Stimulate a circular economy approach by promoting the use of recycled aggregates across Peel L&P through an online webinar and five group site visits offered to colleagues across the company.
- Evidence proactive engagement with the local and wider community in our developments beyond statutory and planning and legislative obligations.
- Undertake a baseline Social Value assessment on at least 50% of new developments at the pre-planning stage.



SDG 8: Decent Work and Economic Growth

1 Year Target

- Support the Plastic Free Mersey initiative providing financial and resource support to the project being delivered by Mersey Rivers Trust in the Mersey catchment.

5 Year Targets

- Contribute to at least 4 STEM initiatives in the areas in which our projects are located.
- Increase engagement with company wide initiatives and organise at least 1 team away day per year to support knowledge sharing.
- Support local authorities in which our developments are based by communicating upcoming construction and operational facilities, employment opportunities to allow for further education training alignment.
- Support public sector and wider initiatives to achieve carbon reduction and Covid recovery plans in the regions where our projects are located.

SDG 9: Industry, Innovation and Infrastructure

1 Year Target

- At the newly constructed construction and demolition (C&D) waste recycling plant in Salford, monitor water usage throughout the year to allow a better understanding of how this can be reduced across the facility.

5 Year Targets

- Seek to identify and develop up to 5 Hydrogen Production plants over the next 5 years, that can assist local industry to decarbonise and create a local source of clean fuel for the transport sector.
- Seek to identify and develop up to 2 Hydrogen Refuelling stations over the next 5 years, to create the infrastructure needed to decarbonise the transport sector.
- Create Peel NRE's first plastic park at Protos which will process up to 300,000 tonnes of plastics that would otherwise go to landfill, incineration or be shipped abroad for processing.
- Explore low carbon energy solutions for future district heat network projects.

SDG 13: Climate Action

1 Year Target

- Aim to enrol 10 NRE team members onto Carbon Literacy Training.

5 Year Target

- Carry out a Climate Risk Assessment for Peel NRE's Protos site.

